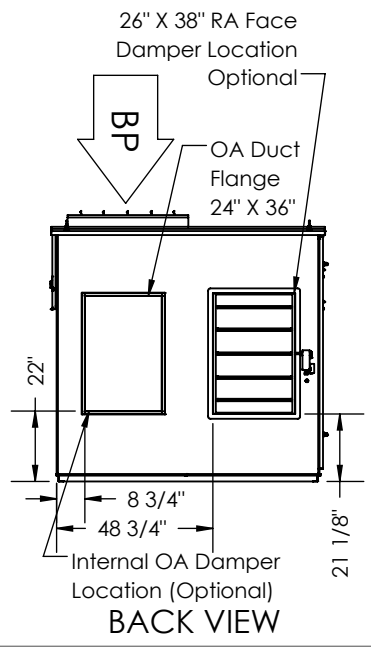
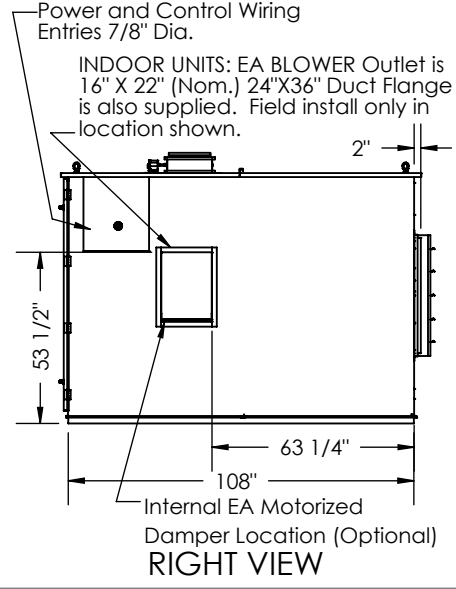
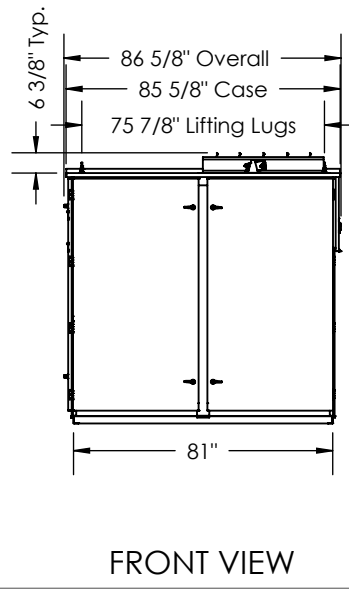
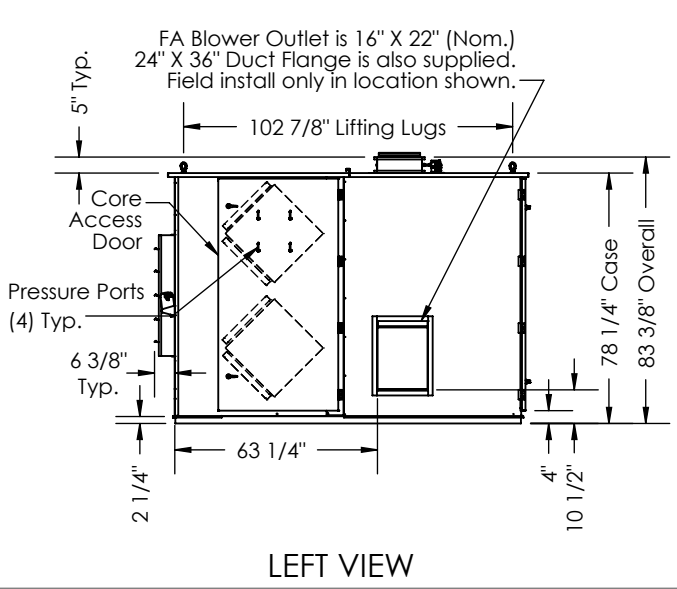


ABBREVIATIONS
 EA: Exhaust Air to outside
 OA: Outside Air intake
 RA: Room Air to be exhausted
 FA: Fresh Air to inside
 BP: Bypass Air Intake

INSTALLATION ORIENTATION
 Unit must be installed in orientation shown.

- NOTE**
1. ALL UNITS HAVE INTERNAL EA BACKDRAFT DAMPER. UNLESS AN EA MOTORIZED ISOLATION DAMPER IS SPECIFIED.
 2. UNLESS OTHERWISE SPECIFIED, DIMENSIONS ARE ROUNDED TO THE NEAREST EIGHTH OF AN INCH.
 3. SPECIFICATIONS MAY BE SUBJECT TO CHANGE WITHOUT NOTICE.
 4. DAMPER SWINGS IN DIRECTION OF AIRFLOW. MIN. DUCT CLEARANCE FROM DAMPER BLADE WHEN FULLY OPENED TO BE 2". SMACNA RULES APPLY.
 5. UNITS WITH BYPASS WILL REQUIRE ADDITIONAL SPACE FOR THE CONNECTION OF THE BYPASS DUCT (BY OTHERS).
 6. FOR INSTALLATION DETAILS, REFER TO I&O MANUAL SUPPLEMENT FOR BYPASS.



Model: HE6XIN [Bypass]
 Drawing Type: Unit Dimension
 Version: AUG18

