

HE 6XIN

Energy Recovery Ventilator Standard & Bypass Economizer Option



For safety listed products, see LE-SERIES models.

INDOOR UNIT



Download specification at:
renewaire.com/specifications

SPECIFICATIONS

Ventilation Type:

Static plate, heat and humidity transfer

Typical Airflow Range: 1,500-6,500 CFM

AHRI 1060 Certified Core:

Six L125-G5

Standard Features:

TEFC Premium efficiency motors

Motor starters

Non-fused disconnect

24 VAC transformer/relay package

Filters:

Total qty. 12, MERV 8: 20" x 20" x 2"

Unit Dimensions & Weight:

88" L x 113 1/2" W x 81 3/4" H

2,235-2,852 lbs., varies by option(s)

Max. Shipping Dimensions & Weight (on pallet):

116" L x 90" W x 90" H

3,190 lbs.

Motor(s):

Qty. 2, Belt drive blower/standard motor packages with adjustable sheaves (see table below)

Options:

Integrated programmable controls

Fused disconnect

Double wall construction

Factory supplied and mounted variable frequency drives (VFDs) - one or both airstreams

Motorized isolation dampers - OA, EA or both airstreams

Qty. 2, Factory mounted filter alarms

Exterior paint - white, custom colors

Bypass economizer (see bypass DIM drawing) -

dry-bulb temperature controls (standard),

enthalpy controls (option)

Accessories:

Filters - MERV 13, 2" (shipped loose)

Digital time clock - wall mount (TC7D-W),

in exterior enclosure (TC7D-E)

Motion occupancy control - ceiling mount (MC-C),

wall mount (MC-W)

Carbon dioxide control - wall mount (CO2-W),

duct mount (CO2-D)

Electric duct heater - EK series (1-60 kW),

EH series (61-175 kW)

Indirect gas-fired duct furnace - GH series

(50-400 MBH), installed downstream of any fans

AIRFLOW PERFORMANCE

Motor HP	Blower RPM	Sheave Adj. Turns Open	External Static Pressure (in. w.g.)																	
			0.00		0.25		0.50		0.75		1.00		1.25		1.50		1.75		2.00	
			CFM	BHP	CFM	BHP	CFM	BHP	CFM	BHP	CFM	BHP	CFM	BHP	CFM	BHP	CFM	BHP	CFM	BHP
5.0	1460	4.5	5005	3.2	4800	3.2	4650	3.1	4475	3.0	4200	2.9	4000	2.8	3750	2.8	3400	2.7	3100	2.5
	1610	2	5550	4.2	5375	4.2	5250	4.1	5100	4.1	4900	4.0	4650	3.9	4500	3.8	4250	3.7	4000	3.6
	1725	0							5525	5.0	5475	5.0	5200	4.9	5050	4.8	4800	4.6	4600	4.5
7.5	1560	4.5	5275	3.7	5200	3.6	4900	3.5	4775	3.5	4550	3.4	4350	3.3	4125	3.3	3875	3.2	3575	3.1
	1740	2	5950	5.0	5825	5.0	5625	4.9	5490	4.9	5325	4.8	5125	4.7	4950	4.7	4750	4.6	4525	4.5
	1865	0	6500	6.5	6350	6.5	6225	6.4	6125	6.4	5910	6.3	5825	6.2	5625	6.1	5410	6.1	5300	6.0

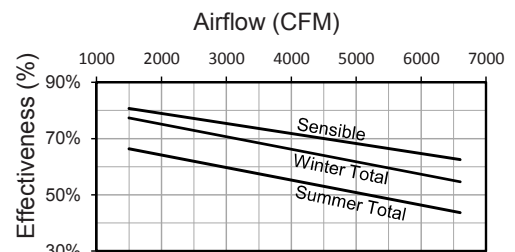
Note: Brake Horse Power (BHP) is for one blower motor package only. Operation in this zone will likely exceed FLA limits.

Note: Airflow performance includes effect of clean, standard filter supplied with unit.

ELECTRICAL DATA

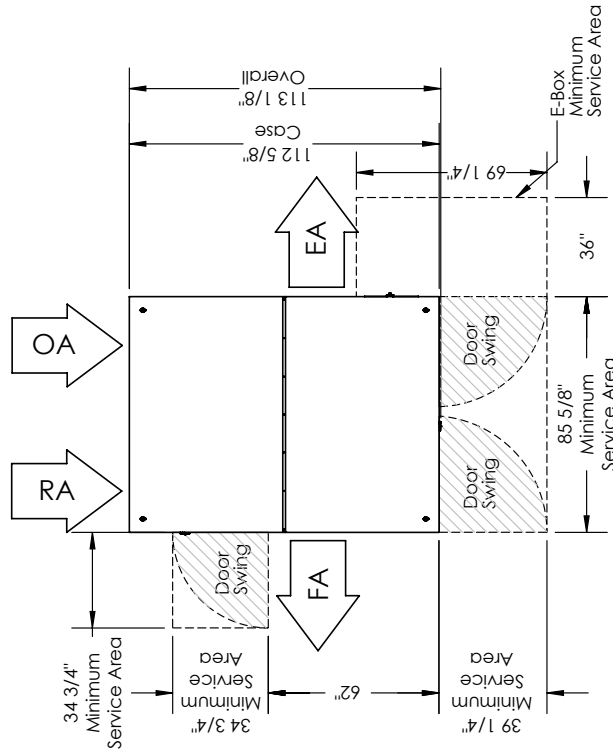
Standard Electrical Specifications							Optional Factory Installed VFD Electrical Specifications		
HP	Volts	HZ	Phase	FLA per motor	Min. Cir. Amps	Max. Overcurrent Protection Device	FLA per motor	Min. Cir. Amps	Max. Overcurrent Protection Device
5.0	208-230	60	Three	14.5-13.4	32.6	45	14.5-13.4	35.9	45
	460	60	Three	6.7	15.1	20	6.7	16.6	20
	575	60	Three	5.3	11.9	15	5.3	13.1	15
7.5	208-230	60	Three	21.0-19.0	47.3	60	21.0-19.0	52.0	60
	460	60	Three	9.5	21.4	25	9.5	23.5	25
	575	60	Three	7.6	17.1	20	7.6	18.8	20

CORE PERFORMANCE

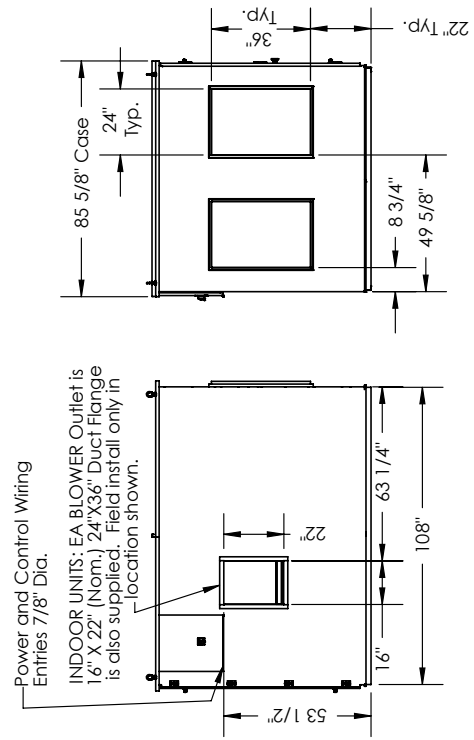


At AHRI 1060 standard conditions.
See all AHRI certified ratings at www.ahrinet.org.

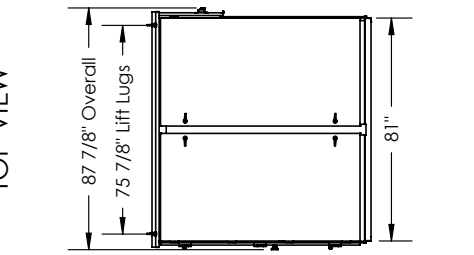
HE6XIN Energy Recovery Ventilator Standard



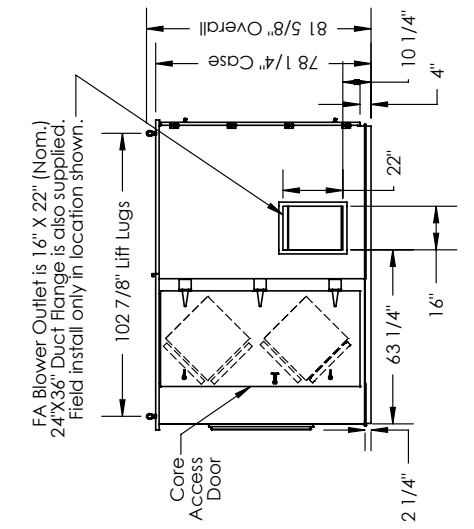
TOP VIEW



RIGHT VIEW



FRONT VIEW



LEFT VIEW

FA Blower Outlet is 16" X 22" (Nom.) 24"X36" Duct Flange is also supplied. Field install only in location shown.

Power and Control Wiring Entries 7/8" Dia.

INDOOR UNITS: EA BLOWER Outlet is 16" X 22" (Nom.) 24"X36" Duct Flange is also supplied. Field install only in location shown.

ABBREVIATIONS

- EA: Exhaust Air to outside
- OA: Outside Air intake
- RA: Room Air to be exhausted
- FA: Fresh Air to inside

INSTALLATION ORIENTATION

Unit must be installed in orientation shown.

NOTE

1. ALL UNITS HAVE INTERNAL LEA BACKDRAFT DAMPER, UNLESS AN EA MOTORIZED ISOLATION DAMPER IS SPECIFIED.
2. UNLESS OTHERWISE SPECIFIED, DIMENSIONS ARE ROUNDED TO THE NEAREST EIGHTH OF AN INCH.
3. SPECIFICATIONS MAY BE SUBJECT TO CHANGE WITHOUT NOTICE.

BACK VIEW



AIRFLOW CONFIGURATION
Available as shown in dimension drawing.



UNIT MOUNTING & APPLICATION
Must be mounted as shown. Airstreams can not be switched.