

LE 6XINH

Energy Recovery Ventilator Standard



INDOOR UNIT



LE6XINH shown

Download specification at:
renewaire.com/specifications

SPECIFICATIONS

Ventilation Type:

Static plate, heat and humidity transfer

Typical Airflow Range: 1,500-6,600 CFM

AHRI 1060 Certified Core: Six L125-G5

Standard Features:

- TEFC Premium efficiency motors
- Motor starters
- Non-fused disconnect
- 24 VAC transformer/relay package

Filters:

Total qty. 12, MERV 8: 20" x 25" x 2"

Unit Dimensions & Weight:

80 1/2" L x 125 1/2" W x 71 1/4" H
Modular (per module) 943-1,340 lbs., varies by option(s)
Assembled (1-piece) 1,975-2,576 lbs., varies by option(s)

Max. Shipping Dimensions & Weight (on pallet):

Modular (2-modules) 80" L x 90" W x 78" H
Module 1 - 1,500 lbs., Module 2 - 1,394 lbs.
Assembled (1-piece) 160" L x 90" W x 78" H
2,853 lbs.

Motor(s):

Qty. 2, Belt drive blower/standard motor packages with choice of adjustable sheaves for low, medium or high blower speed (see table below)

Options:

- Integrated programmable controls
- Fused disconnect
- Double wall construction
- Factory supplied and mounted variable frequency drives (VFDs) - one or both airstreams
- Motorized isolation dampers - EA, FA or both airstreams
- Qty. 2, Factory mounted filter alarms
- Exterior paint - white, custom colors
- Spring vibration isolators

Accessories:

- Filters - MERV 13, 2" or 4"; MERV 8, 4" (shipped loose)
- Digital time clock - wall mount (TC7D-W), in exterior enclosure (TC7D-E)
- Motion occupancy control - ceiling mount (MC-C), wall mount (MC-W)
- Carbon dioxide control - wall mount (CO2-W), duct mount (CO2-D)
- Electric duct heater - EK series (1-60 kW), EH series (61-175 kW)
- Indirect gas-fired duct furnace - GH series (50-400 MBH), installed downstream of any fans

AIRFLOW PERFORMANCE

Airflow CFM	External Static Pressure (in.w.g.)																				
	0.00		0.25		0.50		0.75		1.00		1.25		1.50		1.75		2.00				
	BHP	RPM	BHP	RPM	BHP	RPM	BHP	RPM	BHP	RPM	BHP	RPM	BHP	RPM	BHP	RPM	BHP	RPM			
1500	3 HP LOW SPEED																				
2000	3 HP LOW SPEED																				
2500	3 HP LOW SPEED																				
3000	3 HP LOW SPEED																				
3500	3 HP LOW SPEED																				
3750	3 HP LOW SPEED																				
4000	3 HP LOW SPEED																				
4250	3 HP LOW SPEED																				
4500	3 HP LOW SPEED	2.1	770	2.2	820	2.4	870	2.6	920	2.8	970	3.1	1030	3.3	1080	3.6	1130	3.9	1180		
4750		2.4	810	2.5	850	2.7	900	2.9	950	3.1	990	3.3	1040	3.6	1090	3.9	1140	4.2	1190		
5000		2.7	850	2.8	890	3.0	930	3.2	970	3.4	1010	3.7	1060	3.9	1110	4.2	1150	4.5	1210		
5250		3.0	880	3.2	920	3.4	960	3.5	990	3.8	1030	4.0	1080	4.3	1120	4.6	1170	4.9	1220		
5500	5 HP LOW SPEED	3.4	910	3.5	950	3.7	980	3.9	1020	4.1	1060	4.4	1100	4.7	1140	5.0	1190	5.4	1240		
5750		3.8	950	3.9	980	4.1	1010	4.3	1040	4.5	1080	4.8	1120	5.1	1160	5.4	1200	5.8	1260		
6000		4.2	980	4.3	1000	4.5	1030	4.7	1070	5.0	1100	5.2	1140	5.5	1180	5.9	1220	6.3	1270		
6250		4.6	1000	4.8	1030	5.0	1060	5.2	1090	5.4	1120	5.7	1160	6.0	1190	6.3	1240	6.8	1290		
6500	7.5 HP LOW SPEED																				
6600	7.5 HP LOW SPEED																				
												7.5 HP MED SPEED						7.5 HP HIGH SPEED			

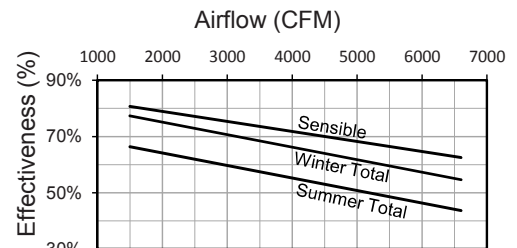
Note: Airflow performance includes effect of clean, standard filter supplied with unit.

ELECTRICAL DATA

Standard Electrical Specifications							Optional Factory Installed VFD Electrical Specifications		
HP	Volts	HZ	Phase	FLA per motor	Min. Cir. Amps	Max. Overcurrent Protection Device	FLA per motor	Min. Cir. Amps	Max. Overcurrent Protection Device
3.0	208-230	60	Single	14.7-14	33.1	40	9.38-8.48	40.2	45
	208-230	60	Three	9.38-8.48	21.1	25	9.38-8.48	23.2	25
	460 575	60 60	Three Three	4.24 3.3	9.5 7.4	15 15	4.24 3.3	10.5 8.2	15 15
5.0	208-230	60	Three	14.5-13.4	32.6	45	14.5-13.4	35.9	45
	460	60	Three	6.7	15.1	20	6.7	16.6	20
	575	60	Three	5.3	11.9	15	5.3	13.1	15
7.5	208-230	60	Three	21.0-19.0	47.3	60	21.0-19.0	52.0	60
	460	60	Three	9.5	21.4	25	9.5	23.5	25
	575	60	Three	7.6	17.1	20	7.6	18.8	20

Specifications may be subject to change without notice.

CORE PERFORMANCE



At AHRI 1060 standard conditions.
See all AHRI certified ratings at www.ahrinet.org.

LEGXINH Energy Recovery Ventilator Standard

ABBREVIATIONS

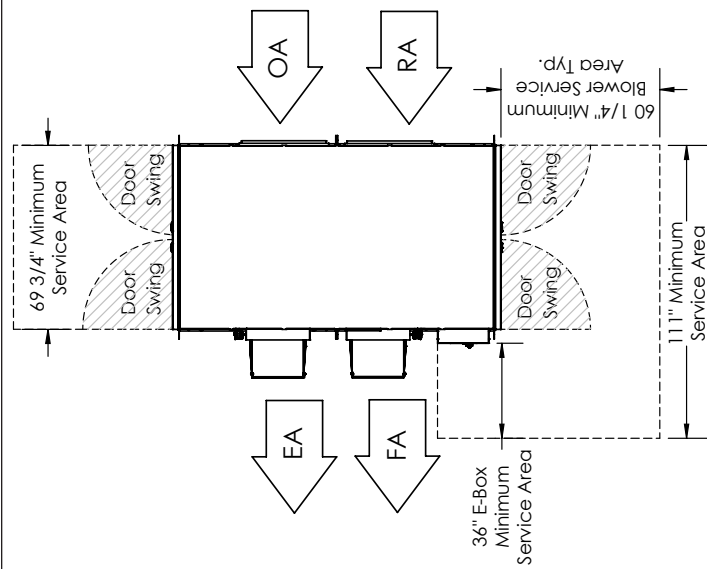
- EA: Exhaust Air to outside
- OA: Outside Air intake
- RA: Room Air to be exhausted
- FA: Fresh Air to inside

INSTALLATION ORIENTATION

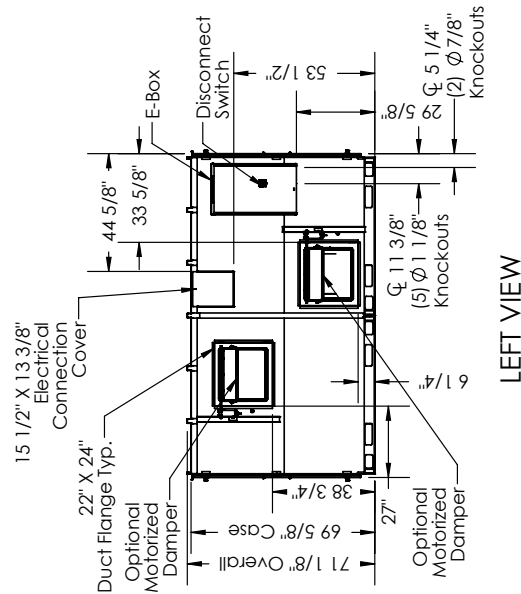
Unit must be installed in orientation shown.

NOTE

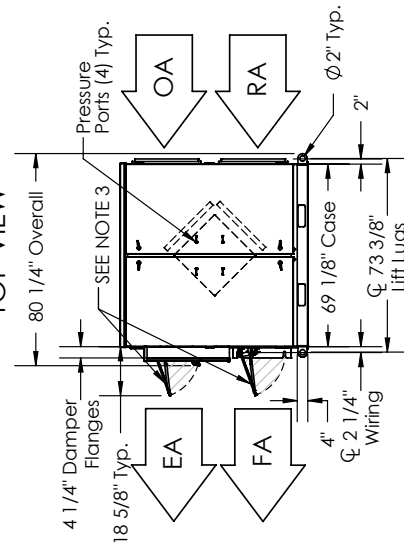
1. UNLESS OTHERWISE SPECIFIED, DIMENSIONS ARE ROUNDED TO THE NEAREST EIGHTH OF AN INCH.
2. SPECIFICATIONS MAY BE SUBJECT TO CHANGE WITHOUT NOTICE.
3. DAMPER SWINGS IN DIRECTION OF AIRFLOW. MIN. DUCT CLEARANCE FROM DAMPER BLADE WHEN FULLY OPENED TO BE 2". SMACNA RULES APPLY.



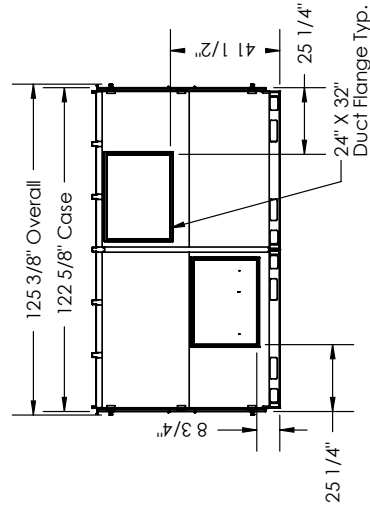
TOP VIEW



LEFT VIEW



FRONT VIEW



RIGHT VIEW

AIRFLOW CONFIGURATION

Available as shown in dimension drawing.

UNIT MOUNTING & APPLICATION

Must be mounted as shown. RA/EA airstream can be switched with OA/FA airstream unless certain options are selected.

