

BR 70

INDOOR UNIT
Duct Mounted or Thru-the-Wall



Energy Recovery Ventilator



SPECIFICATIONS

Ventilation Type:
Static plate, heat and humidity transfer

Typical Airflow Range: 40–70 CFM

Unit is Tested to CSA C439 Protocol:
Using one L-30-G5 Core

Standard Features:
White painted cabinet
Line-cord power supply
Built-in control
Unit may be mounted in any orientation
Cross-core differential pressure ports

Control:
Built-in proportional runtime control and switched terminals for furnace/AC interconnect

Filters:
Total qty. 2, MERV 8, spun-polyester media:
7 1/2" x 10 1/2" x 1"

Unit Weight: 38 lbs.

Max. Shipping Dimensions & Weight (in carton):
30" L x 22" W x 15" H
50 lbs.

Motor(s):
Qty. 1, Double-shaft standard motor

Accessories:
Backdraft damper: 6", 8"
Automatic balancing damper: 4", 5", 6"
Louvered wall vent 6": white, brown
Exterior thru-the-wall installation kit
Duct collar kit (two collars)
MERV 13 filter: OA airstream (shipped loose)
Electric duct heater: RH series (1–3 kW);
designed for indoor ductwork installation only

ELECTRICAL DATA

HP	Volts	Hz	Phase	Input Watts	FLA
0.08	120	60	Single	94 @ 69 CFM	1.0

UNIT PERFORMANCE

Airflow CFM	ESP in H ₂ O
46	0.40
59	0.30
73	0.20
86	0.10

CORE PERFORMANCE

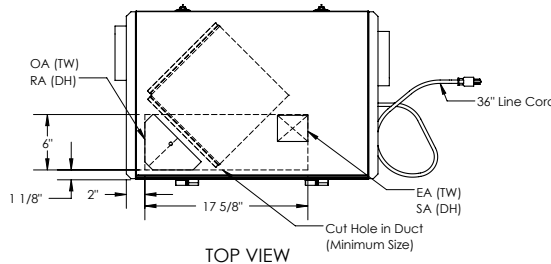
Airflow CFM	Temp EFF%	Total EFF% Winter/Summer
46	80	75/62
59	77	72/58
73	75	69/54
86	72	66/51

Note: These are core-only ratings and are not HVI certified.
Total EFF% calculated at 35/33wb OA and 70/58wb RA (winter)
and 98/78wb OA and 75/63wb RA (summer). See performance
ratings per CSA C439 on pg. 47 of Single/Multi-Family Catalog.

UNIT DIMENSIONS

AIRFLOW ORIENTATION
Available as shown in dimension drawing.

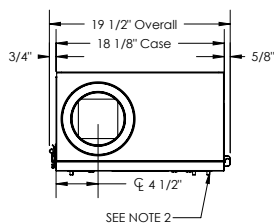
UNIT MOUNTING & APPLICATION
Can be mounted in any orientation. If duct-mounted, airstreams cannot be switched. If mounted with exterior Thru-the-wall installation kit, the RA/EA airstreams are switched with the OA/SA airstreams. If four ducts are connected using duct collar kit, airstreams may be switched.



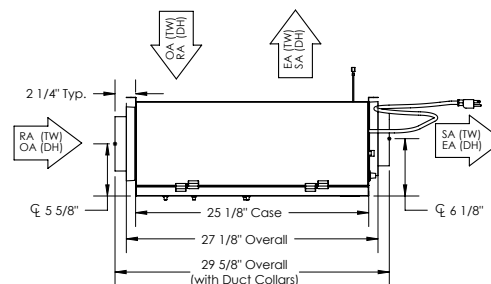
ABBREVIATIONS
EA: Exhaust Air to outside
OA: Outside Air intake
RA: Room Air to be exhausted
SA: Supply Air to inside
TW: Thru Wall
DH: Duct Hung

INSTALLATION ORIENTATION
Unit may be installed in any orientation.

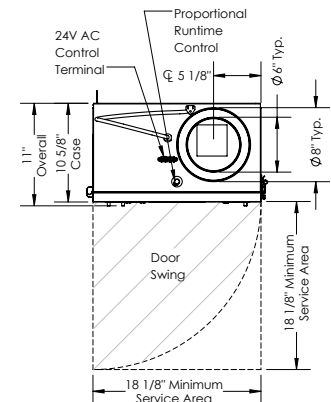
NOTE
1. UNLESS OTHERWISE SPECIFIED, DIMENSIONS ARE ROUNDED TO THE NEAREST EIGHTH OF AN INCH.
2. PRESSURE PORTS FOR EACH AIR STREAM ARE LOCATED ON DOOR OF UNIT.
3. SPECIFICATIONS MAY BE SUBJECT TO CHANGE WITHOUT NOTICE.



LEFT VIEW



FRONT VIEW



RIGHT VIEW