

HE 1XRTC

Energy Recovery Ventilator EC Motor Option



ROOFTOP UNIT Direct Connect



Energy Recovery Core is AHRI Certified®



SPECIFICATIONS

Ventilation Type:

Static plate, heat and humidity transfer

Typical Airflow Range: 500-1,100 CFM

AHRI 1060 Certified Core: One L125-G5

Standard Features:

- Non-fused disconnect
- 24 VAC transformer/relay package
- Cross-core differential pressure ports

Filters:

Total qty. 2, MERV 8: 20" x 20" x 2"

Unit Weight:

272-358 lbs., varies by option(s)

Max. Shipping Dimensions & Weight (on pallet):

96" L x 47" W x 50" H
450 lbs.

Motor(s):

Qty. 2, 0.5 HP, Direct drive EC blower/
motor packages

Options:

- Fused disconnect
- Integrated programmable controls - enhanced, premium
- Qty. 2, Factory mounted filter alarms - both airstreams
- Double wall construction
- Exterior paint - white, custom colors

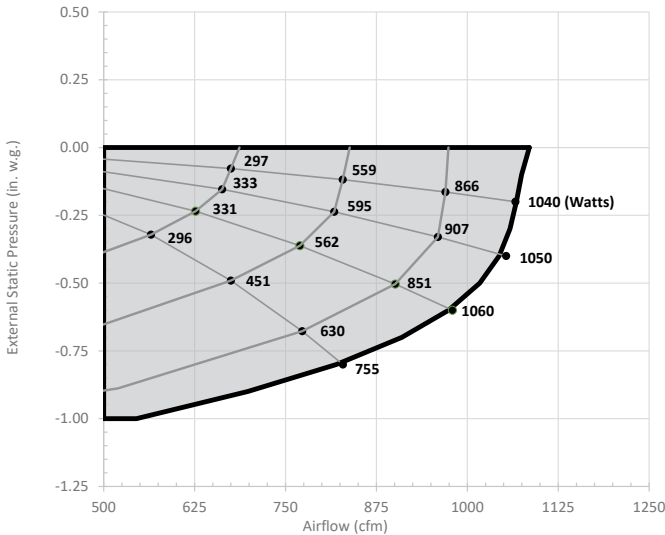
Accessories:

- Filters - MERV 13, 2" (shipped loose)
- Automatic balancing damper - 4", 5", 6"
- RTC transition kit - for vertical RTU, for horizontal RTU
- Rooftop RTC transition paint - white, custom colors
- Digital time clock - wall mount (TC7D-W), in exterior enclosure (TC7D-E)
- Carbon dioxide sensor/control - wall mount (CO2-W), duct mount (CO2-D)
- IAQ sensor - wall mount (IAQ-W), duct mount (IAQ-D)
- Motion occupancy sensor/control - ceiling mount (MC-C), wall mount (MC-W)
- Smoke Detector - duct mount (SD-D)

Note: Electric Duct Heater and Indirect Gas-Fired Duct Furnace are not available on RTC units.

EC MOTOR OPTION OPERATING RANGE

Tie-In Directly to Rooftop A/C Unit*



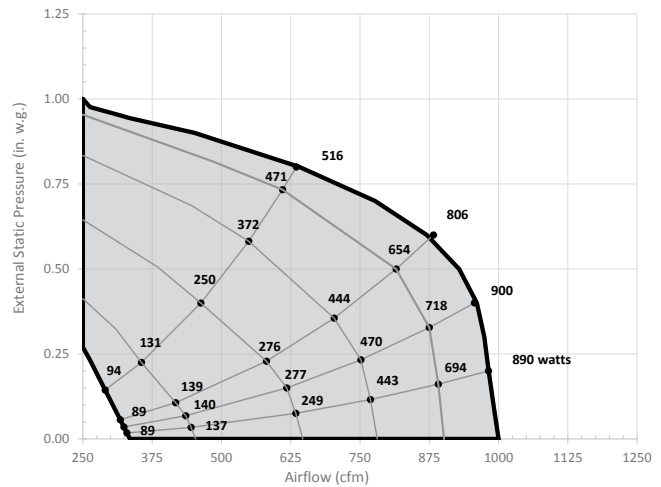
Note: Airflow performance includes effect of clean, standard filter supplied with unit.

● = Actual tested sample points

* See page 38 for installation details.

EC MOTOR OPTION OPERATING RANGE

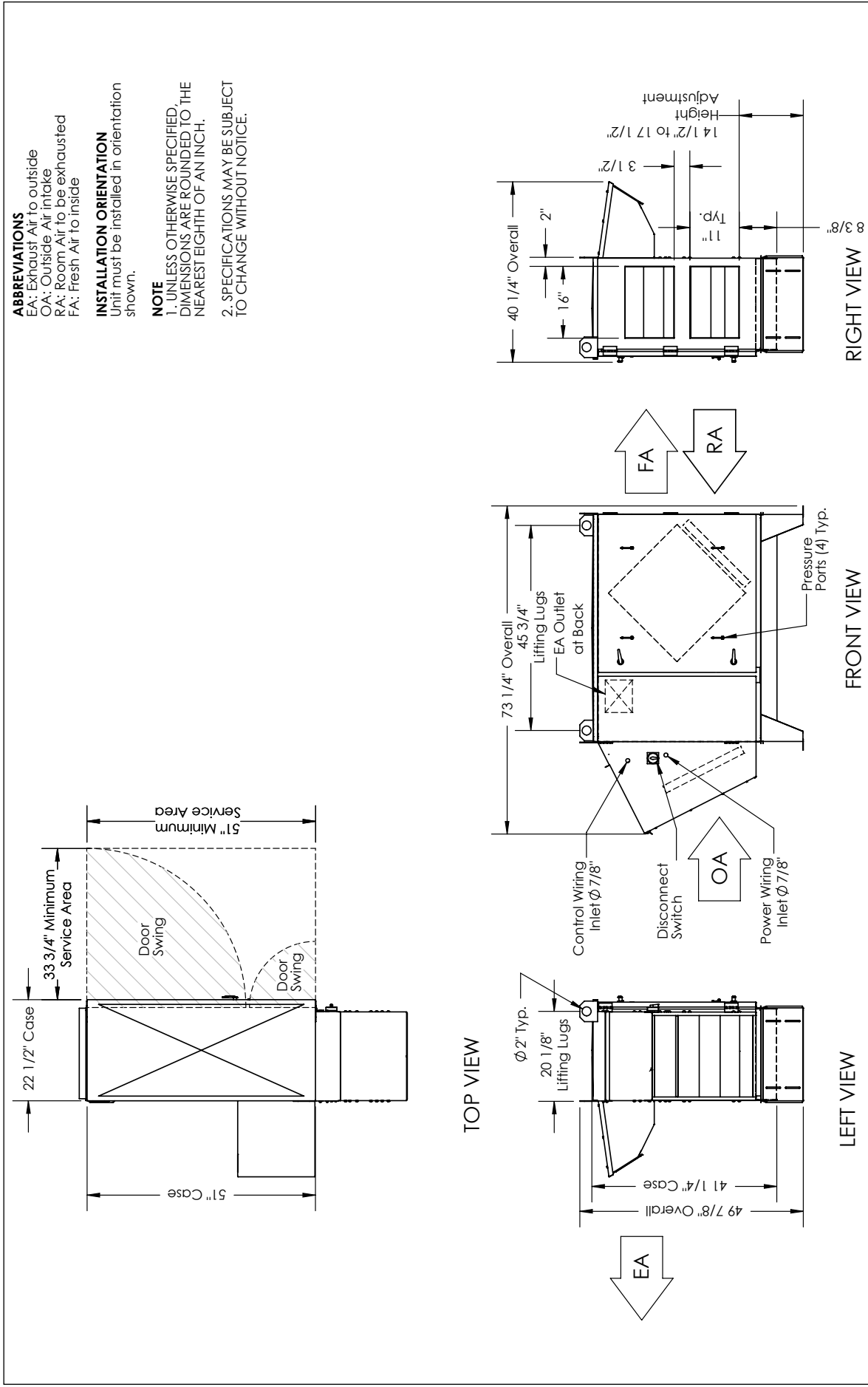
Unit Ducted Independently*



ELECTRICAL DATA

| HP | Volts | HZ | Phase | FLA per motor | Min. Cir. Amps | Max. Overcurrent Protection Device |
|-----|---------|----|--------|---------------|----------------|------------------------------------|
| 0.5 | 120 | 60 | Single | 8.1 | 18.2 | 25 |
| 0.5 | 208-230 | 60 | Single | 4.8 | 10.8 | 15 |

HE1XRTC Energy Recovery Ventilator EC Motor Option



AIRFLOW CONFIGURATION
 Available as shown in dimension drawing.



UNIT MOUNTING & APPLICATION
 Must be mounted as shown. Airstreams can not be switched.

