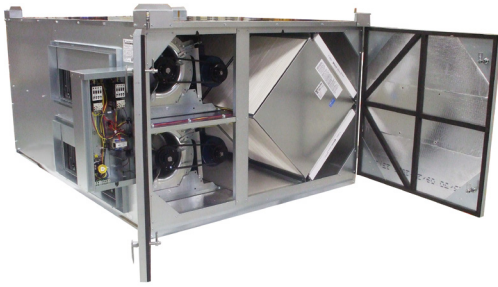


HE 4XINH

ENERGY RECOVERY VENTILATOR



INDOOR UNIT



Energy recovery core is AHRI Certified®



SPECIFICATIONS

- Ventilation Type:**
Static plate, heat and humidity transfer
- Airflow Range:** 1,000–4,395 CFM
- AHRI 1060 Certified Core:** Four L125-G5
- Standard Features:**
TEFC Premium efficiency motors
Motor starters
Non-fused disconnect
24VAC transformer/relay package
Cross-core differential pressure ports
- Filters:**
Total qty. 8, MERV 8: 20" x 20" x 2"
- Unit Weight:**
723–1,092 lbs., varies by option(s)
- Max. Shipping Dimensions & Weight (on pallet):**
80" L x 90" W x 50" H
1,228 lbs.
- Motor(s):**
Qty. 2, Belt drive blower/standard motor packages with adjustable sheaves (see table below)

- Options:**
Onboard variable frequency drives (VFDs): both airstreams
Shaft grounding ring on motors with VFDs
Fused disconnect
Integrated programmable controls: enhanced, premium
Bypass economizer damper (see DIM drawing): dry-bulb temperature controls (standard), enthalpy controls (option)
Class 1 low leakage motorized isolation dampers: OA, RA or both airstreams
Factory mounted filter alarms: both airstreams
Double wall construction
Exterior paint: white, custom colors
- Accessories:**
Filters: MERV 13, 2" (shipped loose)
Automatic balancing damper: 4", 5", 6"
Digital time clock: wall mount (TC7D-W), in exterior enclosure (TC7D-E)
Carbon dioxide sensor/control: wall mount (CO2-W), duct mount (CO2-D)
IAQ sensor: wall mount (IAQ-W), duct mount (IAQ-D)
Motion occupancy sensor/control: ceiling mount (MC-C), wall mount (MC-W)
Smoke detector: duct mount (SD-D)
Indoor electric duct heater: EK series (1–175 kW)
Indirect gas-fired duct furnace: GH series (50–400 MBH); Installed downstream of any fans

AIRFLOW PERFORMANCE

Motor HP	Blower RPM	Sheave Adj. Turns Open	External Static Pressure (Inches Water Column)													
			0.00		0.25		0.50		0.75		1.00		1.25		1.50	
			SCFM	BHP	SCFM	BHP	SCFM	BHP	SCFM	BHP	SCFM	BHP	SCFM	BHP	SCFM	BHP
2.0	1187	4	3215	1.5	2990	1.4	2535	1.2	2120	0.9	1360	0.7				
	1290	2.5	3505	2.0	3300	1.9	3000	1.7	2610	1.4	2060	1.1	1180	0.6		
	1358	1.5					3220	2.0	2885	1.8	2415	1.4	1790	1.1		
	1462	0									2900	2.0	2400	1.6	1730	1.2
3.0	1448	4	3945	2.9	3765	2.8	3515	2.4	3200	2.1	2845	1.9	2310	1.5	1670	1.2
	1520	3					3740	2.9	3475	2.6	3145	2.3	2695	2.0	2165	1.6
	1591	2									3415	2.8	3050	2.4	2580	2.1
	1663	1											3380	3.0	2930	2.5
	1735	0													3300	3.0
5.0	1591	4	4335	3.8	4185	4.0	3965	3.4	3710	3.1	3410	2.8	3050	2.5	2580	2.1
	1696	2					4280	4.1	4060	3.9	3800	3.5	3510	3.2	3100	2.8
	1800	0							4395	4.7	4165	4.3	3900	4.0	3600	3.7

Operation in this zone will likely exceed FLA limits.

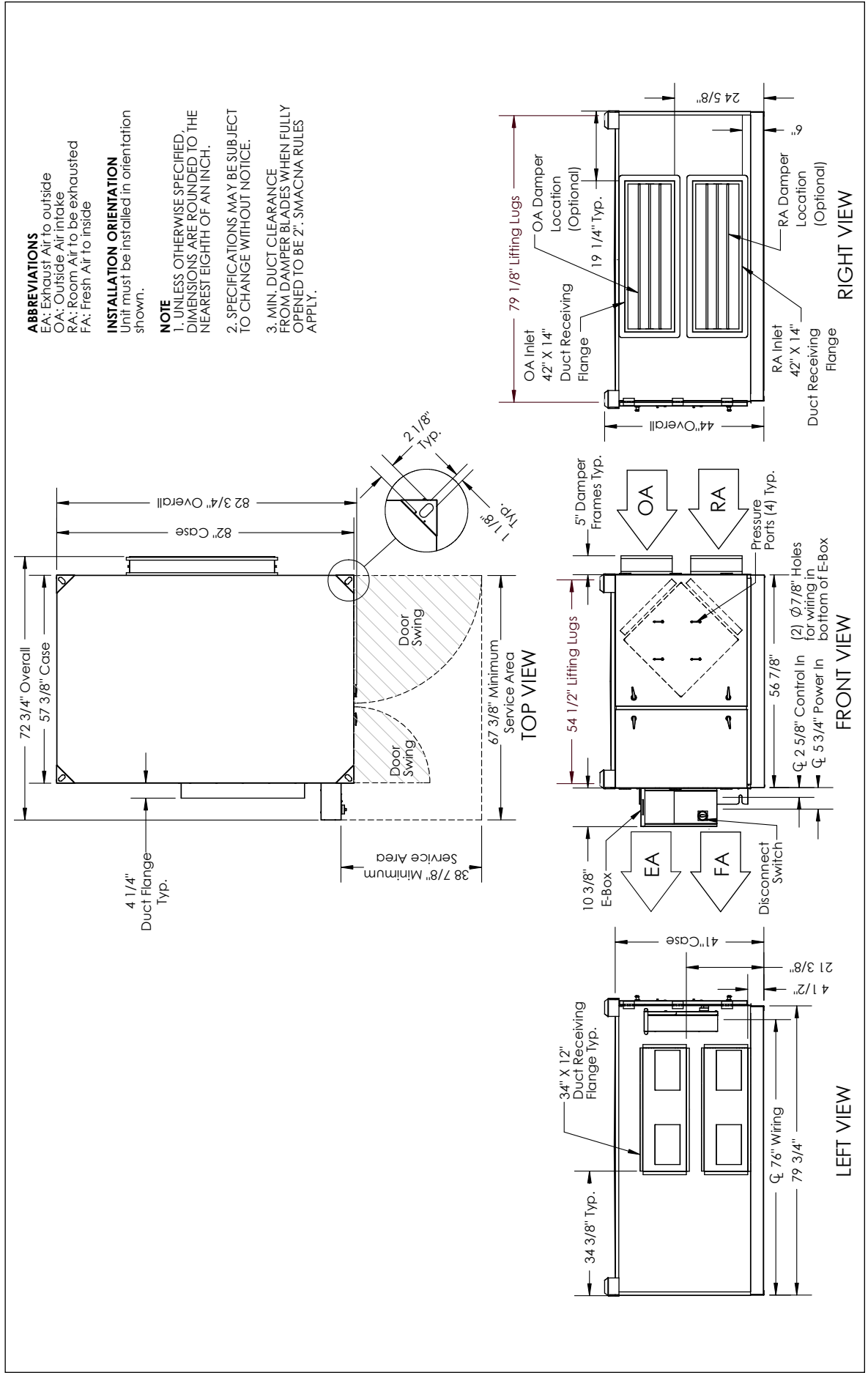
Operation in this zone outside of core airflow limits.

Note: Brake horsepower (BHP) is for one blower motor package only. Airflow performance includes effect of clean, standard filter supplied with unit.

ELECTRICAL DATA

Standard Electrical Specifications							Optional Factory Installed VFD Electrical Specifications		
HP	Volts	Hz	Phase	FLA per motor	Min. Cir. Amps	Max. Overcurrent Protection Device	FLA per motor	Min. Cir. Amps	Max. Overcurrent Protection Device
2.0	120	60	Single	20	45	60			
2.0	208–230	60	Single	10.8–10.0	24.3	35	6.6–5.8	28.3	30
	208–230	60	Three	6.6–5.8	14.9	20	6.6–5.8	16.3	20
	460	60	Three	2.9	6.5	15	2.9	7.2	15
	575	60	Three	2.4	5.4	15	2.4	5.9	15
3.0	208–230	60	Single	14.7–14	33.1	40	9.4–8.5	40.2	45
	208–230	60	Three	9.4–8.5	21.1	25	9.4–8.5	23.2	25
	460	60	Three	4.2	9.5	15	4.2	10.5	15
	575	60	Three	3.3	7.4	15	3.3	8.2	15
5.0	208–230	60	Three	14.5–13.4	32.6	45	14.5–13.4	35.9	45
	460	60	Three	6.7	15.1	20	6.7	16.6	20
	575	60	Three	5.3	11.9	15	5.3	13.1	15

HE4XINH ENERGY RECOVERY VENTILATOR



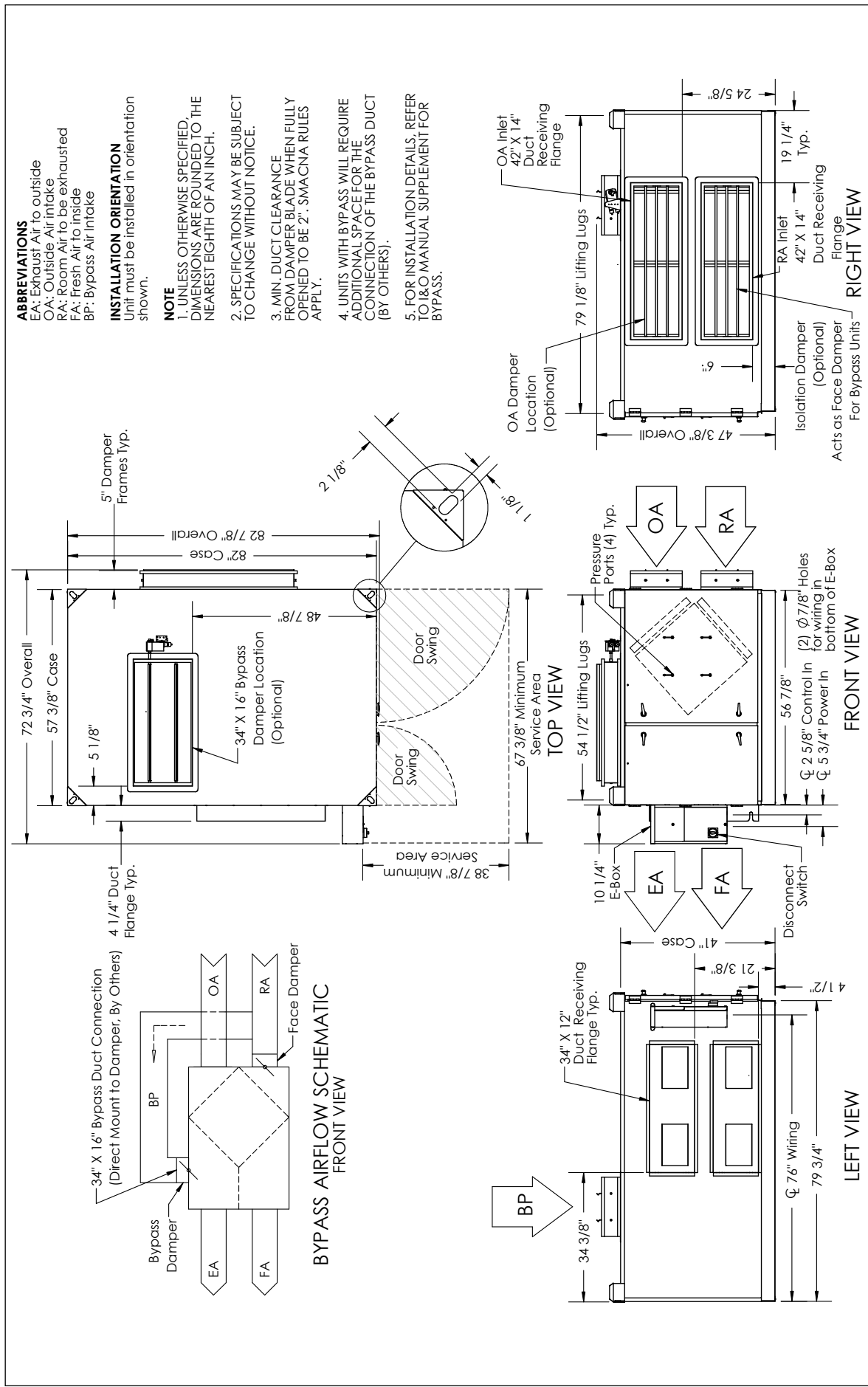
UNIT MOUNTING & APPLICATION
 Must be mounted as shown. RA/EA airstream can be switched with OA/FA airstream unless certain options are selected.



AIRFLOW ORIENTATION
 Available as shown in dimension drawing.



HE4XINH ENERGY RECOVERY VENTILATOR WITH BYPASS ECONOMIZER



UNIT MOUNTING & APPLICATION



Must be mounted as shown. Airstreams cannot be switched.

AIRFLOW ORIENTATION

Available as shown in dimension drawing.

