

BR 70

INDOOR UNIT
Duct Mounted or Thru-the-Wall



Download specification at:
renewaire.com/specifications

Energy Recovery Ventilator Standard



SPECIFICATIONS

Ventilation Type:
Static plate, heat and humidity transfer

Typical Airflow Range: 40-70 CFM

Unit is Tested to CSA C439 Protocol:
Using one L-30-G5 Core

Standard Features:
White painted cabinet
Line-cord power supply
Built-in control
Unit may be mounted in any orientation
Cross-core differential pressure ports

Control:
Built-in proportional runtime control and switched terminals for furnace/AC interconnect

Filters:
Total qty. 2, MERV 8, spun-polyester media:
7 1/2" x 10 1/2" x 1"

Unit Dimensions & Weight:
29 3/4" L x 19 1/4" W x 10 3/4" H
38 lbs.

Max. Shipping Dimensions & Weight (in carton):
30" L x 22" W x 15" H
50 lbs.

Motor(s):
Qty. 1, Double-shaft standard motor

Accessories:
Backdraft damper 6", 8"
Automatic balancing damper 4", 5", 6"
Louvered wall vent 6" - white, brown
Exterior thru-the-wall installation kit
Duct collar kit (two collars)
MERV 13 filter - OA airstream (shipped loose)
Electric duct heater - RH series (1-3 kW);
designed for indoor ductwork installation only

Note: Indirect Gas-Fired Duct Furnace is not available on the BR70.

ELECTRICAL DATA

HP	Volts	HZ	Phase	Input Watts	FLA
0.08	120	60	Single	94 @ 69 CFM	1.0

UNIT PERFORMANCE

Airflow CFM	ESP in H ₂ O
46	0.40
59	0.30
73	0.20
86	0.10

CORE PERFORMANCE

Airflow CFM	Temp EFF%	Total EFF% Winter/Summer*
46	80	75/62
59	77	72/58
73	75	69/54
86	72	66/51

Note: These are core-only ratings and are not HVI certified.
See performance ratings per CSA C439 on pg. 31 of
Single/Multi-Family Catalog.

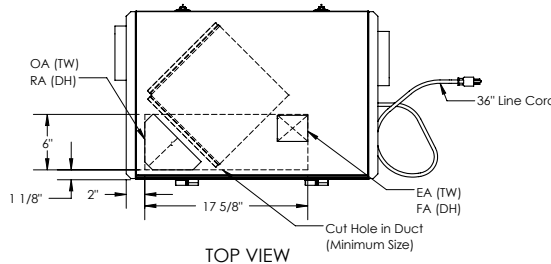
UNIT DIMENSIONS



AIRFLOW ORIENTATION
Available as shown in dimension drawing.



UNIT MOUNTING & APPLICATION
Can be mounted in any orientation. If duct-mounted, airstreams cannot be switched. If mounted with exterior Thru-the-wall installation kit, the RA/EA airstreams are switched with the OA/FA airstreams. If four ducts are connected using duct collar kit, airstreams may be switched.

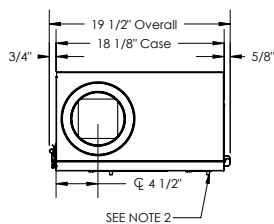


ABBREVIATIONS

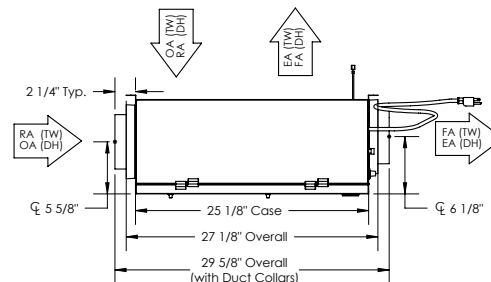
EA: Exhaust Air to outside
OA: Outside Air intake
RA: Room Air to be exhausted
FA: Fresh Air to inside
TW: Thru Wall
DH: Duct Hung

INSTALLATION ORIENTATION
Unit may be installed in any orientation.

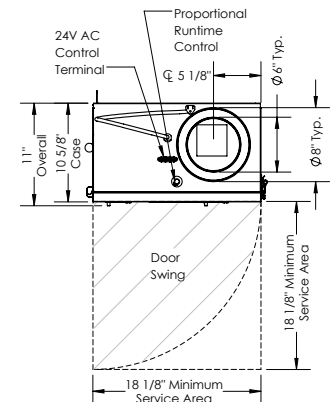
- NOTE**
- UNLESS OTHERWISE SPECIFIED, DIMENSIONS ARE ROUNDED TO THE NEAREST EIGHTH OF AN INCH.
 - PRESSURE PORTS FOR EACH AIR STREAM ARE LOCATED ON DOOR OF UNIT.
 - SPECIFICATIONS MAY BE SUBJECT TO CHANGE WITHOUT NOTICE.



LEFT VIEW



FRONT VIEW



RIGHT VIEW

Specifications may be subject to change without notice.