

DN 2IN

Dedicated Outdoor Air System Standard



INDOOR UNIT
Dedicated Outside Air System Unit with Energy Recovery

NEW



DN3IN, ERV + CC + HGRH + GH (BT) shown

Download specification at:
renewaire.com/specifications

- ERV** - Energy Recovery Ventilator
- EH** - Electric Heater
- CC** - Cooling Coil
- HC** - Heating Coil
- GH** - Gas Heat Module
- HGRH** - Hot Gas Reheat Coil
- BT** - Blow Thru
- DT** - Draw Thru

SPECIFICATIONS

Energy Recovery Type:
Static plate total energy transfer

Typical Airflow Range: 375-1,650 CFM

AHRI 1060 Certified Core:
One L-62-G5 and one L-125 G5

Standard Features:
EC Motors for both airstreams
Direct Drive backward inclined plenum
Higher ESP of up to 2" w.g. at 1,500 CFM
Integrated programmable controls
True 100% Face and bypass enthalpy based modulating economizer
Class 1 low leakage motorized isolation dampers
Stainless steel double-sloped drain pan with cooling option
1" Double wall foam injected 20 gauge galvanized panel construction with R6.5 insulation

Inlets/Outlets:
OA & RA Inlets: 24" x 16"
SA Outlet: 24" x 16"
EA Outlet: 20" x 16"

Filters:
Total qty. 4, MERV 8:
16" x 20" x 2"

Unit Dimensions & Weight for 1" Cabinets
126" L x 60 3/4" W x 71 7/8" H
1250-2425 lbs.

Max. Shipping Dimensions & Weight for 1" Cabinets (on pallet):
140" L x 90" W x 77" H
1450-2625 lbs.

Unit Dimensions & Weight for 2" Cabinets
128" L x 62 3/4" W x 73 7/8" H
1350-2550 lbs.

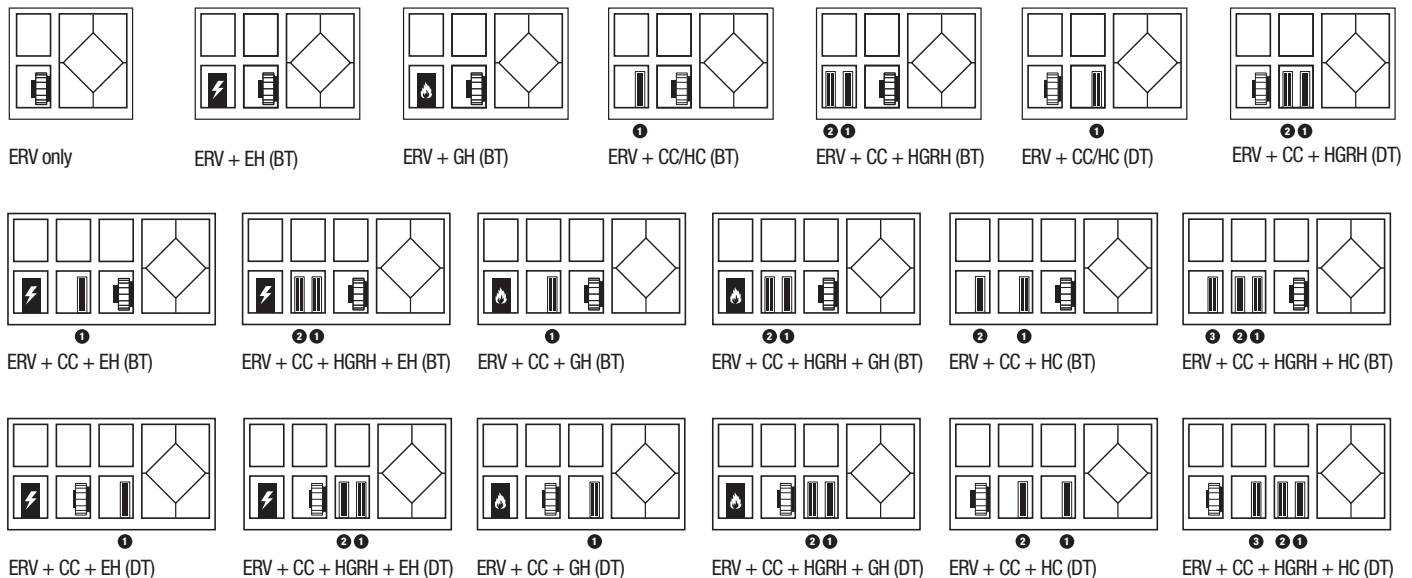
Max. Shipping Dimensions & Weight for 2" Cabinets (on pallet):
140" L x 90" W x 79" H
1550-2750 lbs.

Motor(s):
Qty. 2, Direct drive motorized impeller packages

Options:
DX, heat pump, or chilled water cooling coil
Modulating hot gas reheat
Steam or hot water coil, gas heat module or electric heater
Onboard variable frequency drives (VFDs) - both airstreams
Fused disconnect
Spring isolators (VFDs only)
2" Double wall foam injected 20 gauge galvanized panel construction with R13.0 insulation
Exterior paint - grey, white, custom color
BACNET factory activation
GFCI convenience outlet
Recirculation damper
Drain overflow switch
Electrofin coating for coils

Accessories:
Filters - MERV 13, 2" and 4" (shipped loose), MERV 14, 2" and 4" (shipped loose)
Additional filters available upon request
Duct mounted electric pre-heater (separately powered)
Carbon dioxide sensor/control - wall mount (CO2-W), duct mount (CO2-D)
IAQ sensor - wall mount (IAQ-W), duct mount (IAQ-D)
Motion occupancy sensor/control - ceiling mount (MC-C), wall mount (MC-W)
Smoke detector
Room temperature and humidity sensor
Duct static pressure sensor with display to 10", without display 0-2"
Room pressure sensor with display to 1", without display 0-1"
Waterless trap negative pressure
Waterless trap positive pressure
Remote display

INTERNAL OPTIONS FOR HEATING AND COOLING



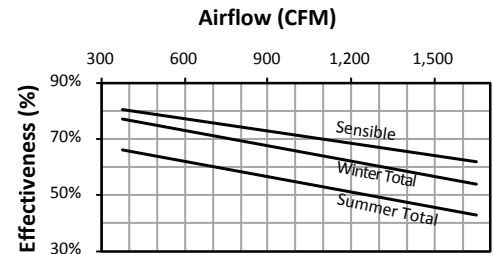
Specifications may be subject to change without notice.

ELECTRICAL DATA

Electrical Specifications							
	Motor Qty/kW or HP	Volts	Frequency	Phase	Min. Cir. Amps.	Max. Overcurrent Protection Device	FLA per motor
EC	2 @ 1.35 kW ea.	200-277	50/60 Hz	Single	15.1	20	6.7-4.8
	2 @ 2.70 kW ea.	200-240	50/60 Hz	Three	19.4	25	8.6-7.2
	2 @ 3.70 kW ea.	380-480	50/60 Hz	Three	13.5	15	6.0-4.6
VFD	2 @ 3HP ea.	208-230	50/60 Hz	Three	20.3	25	9-8.4/4.2
	2 @ 3HP ea.	460	50/60 Hz	Three	9.5	15	4.2
	2 @ 3HP ea.	575	50/60 Hz	Three	7.4	15	3.3

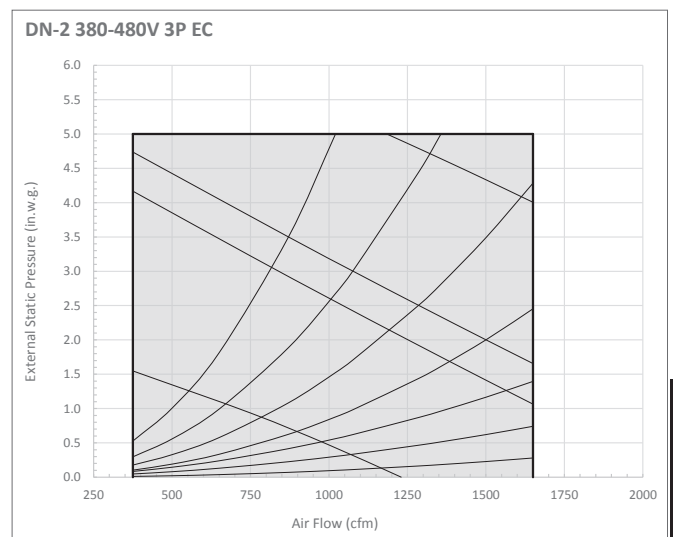
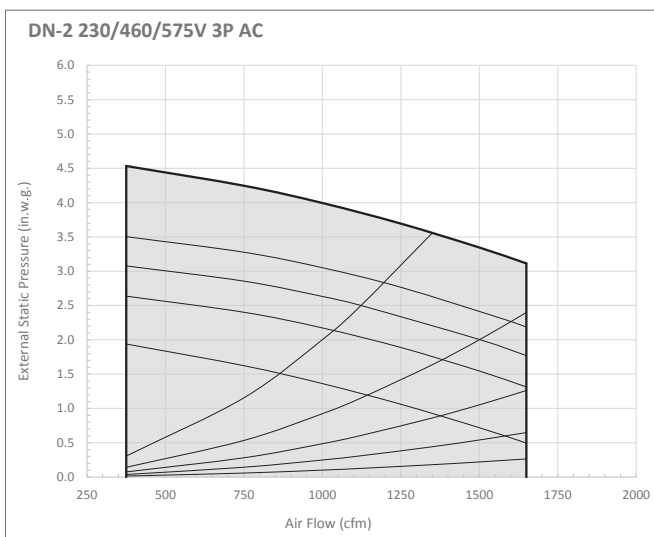
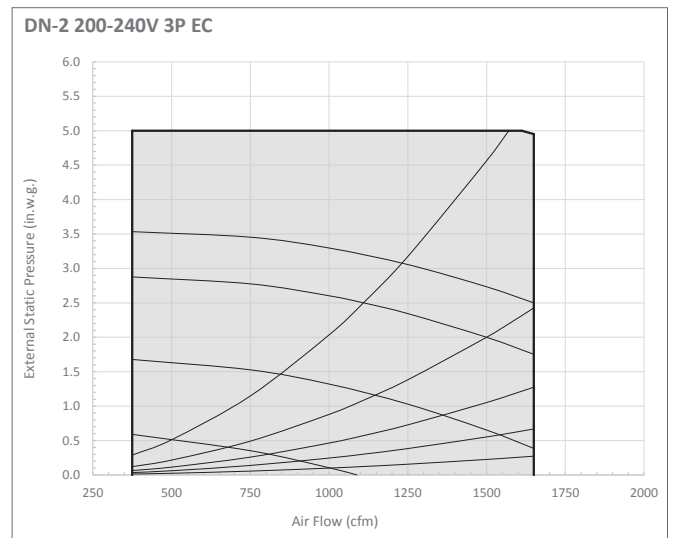
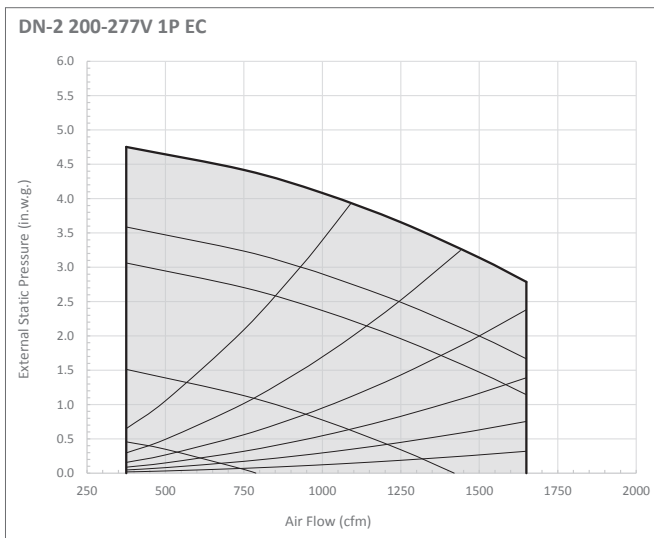
Note: Electrical data shown is for a standard unit without cooling and heating. Refer to cores.renewaire.com for project specific submittal for electrical data for the specific unit with all included options.

CORE PERFORMANCE



At AHRI 1060 standard conditions.
See all AHRI certified ratings at www.ahrinet.org.

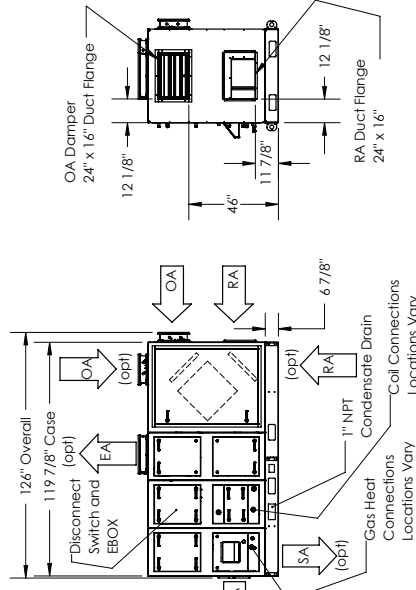
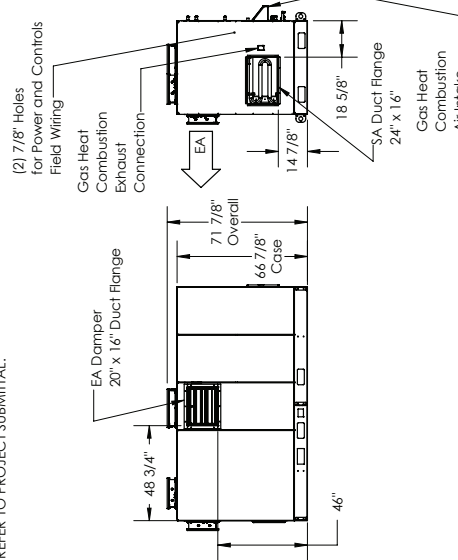
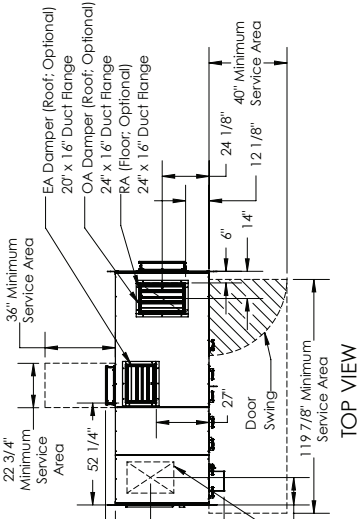
AIRFLOW PERFORMANCE



DN-SERIES

DN2IN Dedicated Outdoor Air System Standard 1" Cabinet

Dimension drawings for the DN depict largest cabinet size available. Refer to CORES.RenewAire.com for project specific unit drawings.



RIGHT VIEW

FRONT VIEW

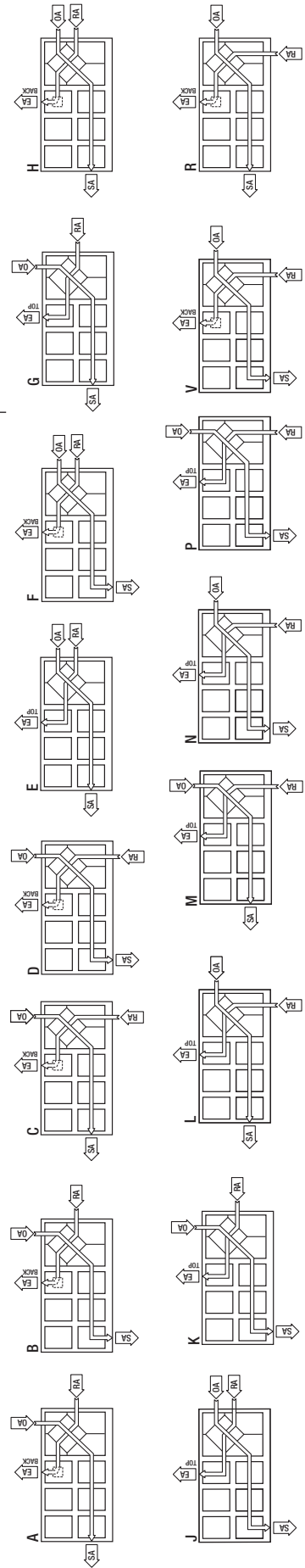
LEFT VIEW

BACK VIEW

AIRFLOW CONFIGURATION

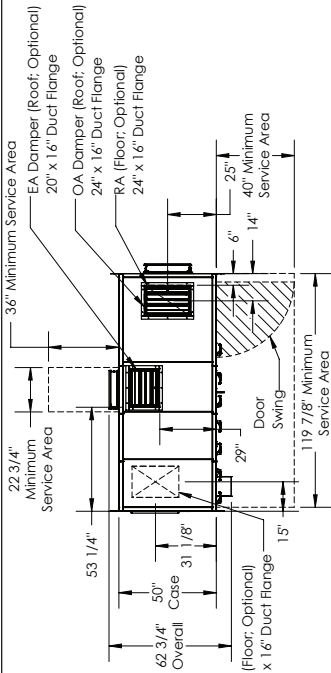
Available as shown:

UNIT MOUNTING & APPLICATION
Must be mounted as shown. Airstreams can not be switched. Duct configuration is field convertible.

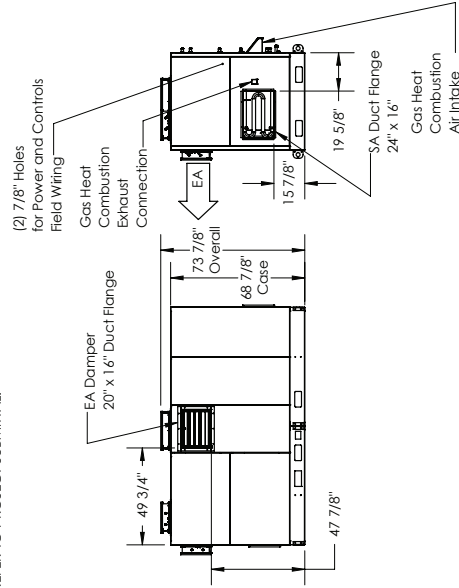


DN2IN Dedicated Outdoor Air System Standard 2" Cabinet

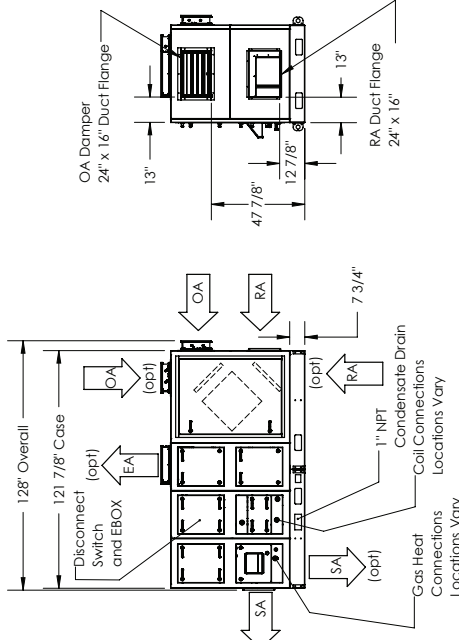
- ABBREVIATIONS**
 EA: Exhaust Air to outside
 OA: Outside Air Intake
 RA: Room Air to be exhausted
 SA: Supply Air to inside
- INSTALLATION ORIENTATION**
 Unit must be installed in orientation shown.
- NOTE**
 1. UNLESS OTHERWISE SPECIFIED, DIMENSIONS ARE ROUNDED TO THE NEAREST EIGHTH OF AN INCH.
 2. SPECIFICATIONS MAY BE SUBJECT TO CHANGE WITHOUT NOTICE.
 3. FOR PIPE CONNECTION DETAILS REFER TO CORES OR UNIT SELECTION SUBMITTAL.
 4. UNIT, UNIT DOORS, AND COILS CANNOT BE MIRRORED.
 5. FOR PROJECT SPECIFIC DRAWINGS REFER TO PROJECT SUBMITTAL.



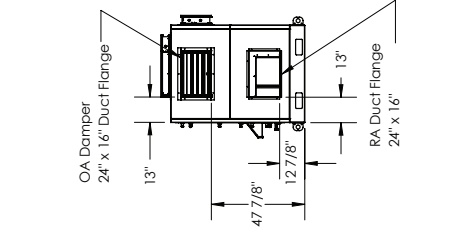
TOP VIEW



BACK VIEW



FRONT VIEW



RIGHT VIEW

Dimension drawings for the DN depict largest cabinet size available. Refer to CORES.RenewAire.com for project specific unit drawings.

AIRFLOW CONFIGURATION

Available as shown:



UNIT MOUNTING & APPLICATION
 Must be mounted as shown. Airstreams can not be switched. Duct configuration is field convertible.

