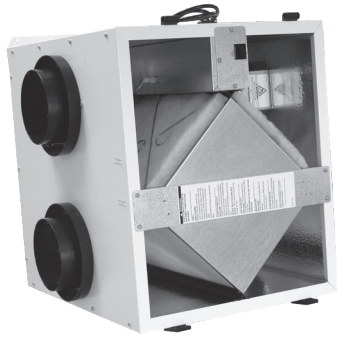


EV 90P

INDOOR UNIT



Download specification at:
renewaire.com/specifications

Energy Recovery Ventilator Standard



SPECIFICATIONS

Ventilation Type:
 Static plate, heat and humidity transfer

Typical Airflow Range: 40-110 CFM

Unit is HVI Tested/Certified per CSA C439
Protocol: Using one L-100 G5 Core

Standard Features:
 White painted cabinet
 Line-cord power supply
 Low-voltage circuit for controls
 Unit may be mounted in any orientation
 Cross-core differential pressure ports

Controls:
 Onboard 24 VAC transformer/relay package
 with switched dry contacts

Filters:
 Total qty. 2, MERV 8, spun-polyester media:
 21 3/4" x 10 1/2" x 1"

Unit Dimensions & Weight:
 22 1/2" L x 24" W x 23 3/4" H
 51 lbs.

Max. Shipping Dimensions & Weight (in carton):
 33" L x 22" W x 29" H
 65 lbs.

Motor(s):
 Qty. 2, Standard motorized impeller blowers

Accessories:
 Backdraft damper 6"
 Wall cap 6" - white, brown
 Percentage timer control (PTL)
 Push-button point-of-use controls (PBL), PTL req'd.
 Percentage timer control with furnace interlock (FM)
 Electric duct heater - RH series (1-11.5 kW);
 designed for indoor ductwork installation only

ELECTRICAL DATA

HP	Volts	HZ	Phase	Input Watts	FLA
0.03	120	60	Single	44 @ 90 CFM	0.35

Note: Indirect Gas-Fired Duct Furnace is not available on the EV90P.

UNIT PERFORMANCE

Airflow CFM	ESP in H ₂ O
42	0.60
56	0.50
73	0.40
87	0.30
99	0.20
108	0.10

CORE PERFORMANCE

Temp EFF%	Total EFF% Winter/Summer*
86	83/71
85	82/70
84	80/68
83	79/67
82	78/66
82	78/65

UNIT DIMENSIONS

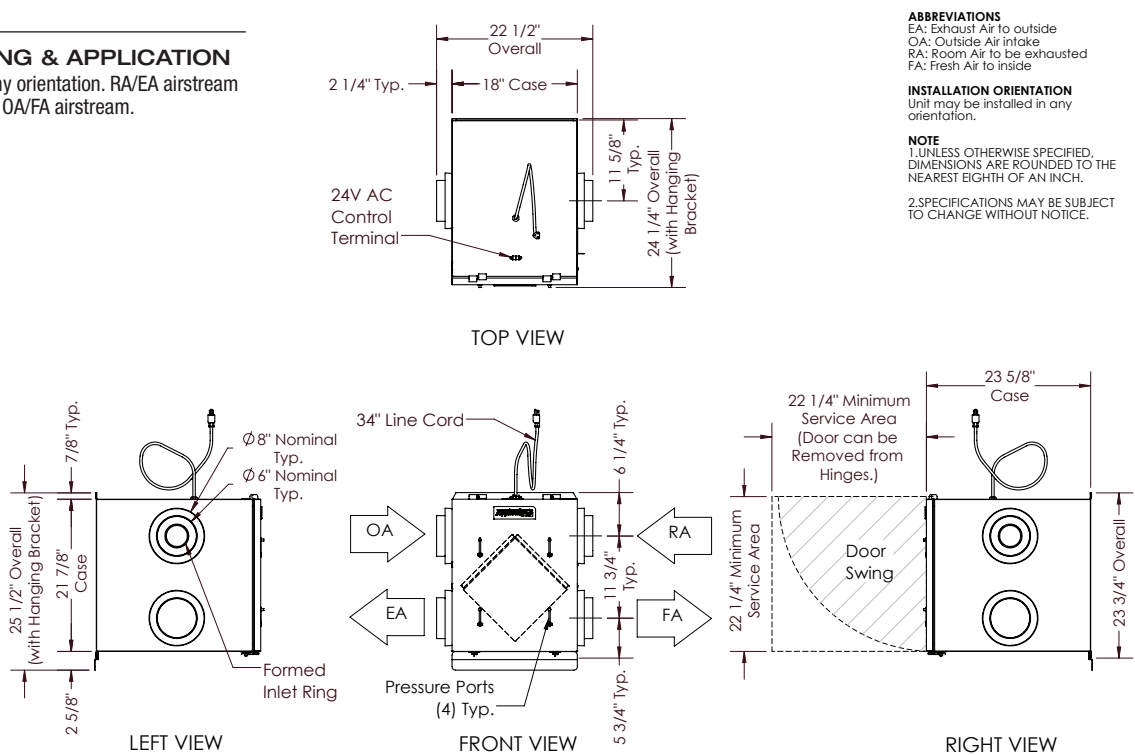


AIRFLOW CONFIGURATION
 Available as shown in dimension drawing.



UNIT MOUNTING & APPLICATION
 Can be mounted in any orientation. RA/EA airstream can be switched with OA/FA airstream.

* See HVI certification ratings on page 24 of RenewAire's Single/Multi-Family Catalog.



Specifications may be subject to change without notice.