

# HE 1XRT

## ROOFTOP UNIT



Download specification at:  
renewaire.com/specifications

## Energy Recovery Ventilator EC Motor Option



### SPECIFICATIONS

**Ventilation Type:**

Static plate, heat and humidity transfer

**Typical Airflow Range:** 250-1,100 CFM

**AHRI 1060 Certified Core:** One L125-G5

**Standard Features:**

- Non-fused disconnect
- 24 VAC transformer/relay package
- Cross-core differential pressure ports

**Filters:**

Total qty. 2, MERV 8: 20" x 20" x 2"

**Unit Dimensions & Weight:**

81" L x 40 1/4" W x 42 1/4" H  
246-366 lbs., varies by option(s)

**Max. Shipping Dimensions & Weight (on pallet):**

96" L x 47" W x 50" H  
458 lbs.

**Motor(s):**

Qty. 2, 0.5 HP ea., Direct drive EC blower/motor packages

**Options:**

- Fused disconnect
- Integrated programmable controls - enhanced, premium
- Class 1 low leakage motorized isolation dampers - OA, RA or both airstreams
- Qty. 2, Factory mounted filter alarms - both airstreams
- Double wall construction
- Exterior paint - white, custom colors

**Accessories:**

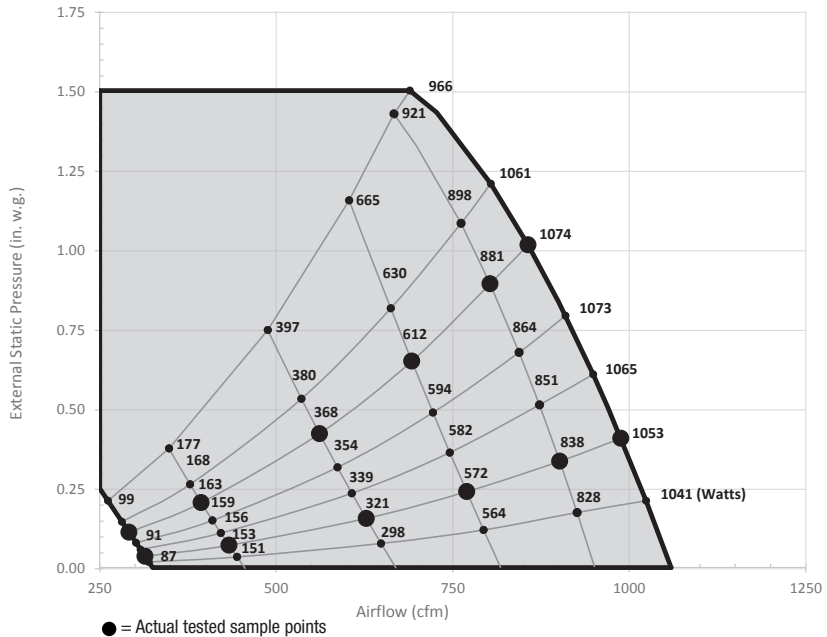
- Filters - MERV 13, 2" (shipped loose)
- Backdraft damper 12"
- Potentiometer speed control - remote installed
- Roof curb - standard 14"
- Curb wind clip
- Engineered combo curb for Trane RTU
- Engineered combo curb for Carrier RTU
- Digital time clock - wall mount (TC7D-W), in exterior enclosure (TC7D-E)
- Carbon dioxide sensor/control - wall mount (CO2-W), duct mount (CO2-D)
- IAQ sensor - wall mount (IAQ-W), duct mount (IAQ-D)
- Motion occupancy sensor/control - ceiling mount (MC-C), wall mount (MC-W)
- Smoke Detector - duct mount (SD-D)
- Electric duct heater - EK series (1-175 kW); designed for indoor ductwork installation only
- Indirect gas-fired duct furnace - GH series (50-400 MBH), installed downstream of any fans

### EC MOTOR OPTION OPERATING RANGE

HE1XRT EC MOTOR		
Sample Points Depicted in Larger Dots		
Airflow (CFM)	External Static Pressure (Inches Water Column)	Unit Power Consumption (Watts)
314	0.04	88
433	0.07	153
627	0.15	321
770	0.24	572
901	0.33	838
988	0.41	1053
291	0.11	93
394	0.20	163
561	0.42	368
692	0.65	612
803	0.89	881
857	1.01	1074

**Note:** Watts is for the entire unit.

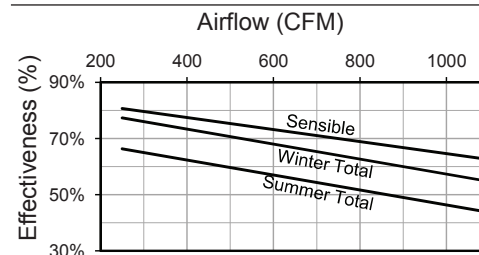
**Note:** Airflow performance includes effect of clean, standard filter supplied with unit.



### ELECTRICAL DATA

HP	Volts	HZ	Phase	FLA per motor	Min. Cir. Amps	Max. Overcurrent Protection Device
0.5	120	60	Single	8.1	18.2	25
0.5	208-230	60	Single	4.8	10.8	15

### CORE PERFORMANCE

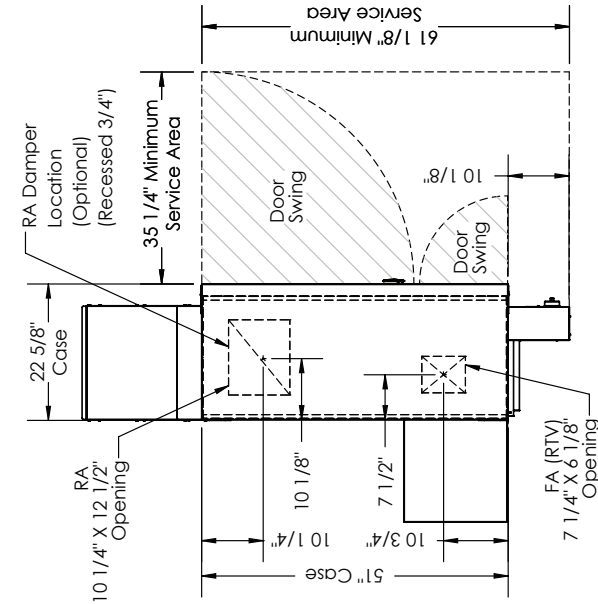


At AHRI 1060 standard conditions. See all AHRI certified ratings at www.ahrinet.org.

Specifications may be subject to change without notice.



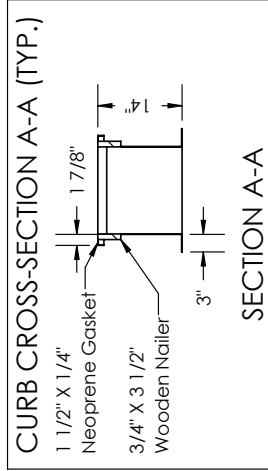
# HE1XR(T/RTV/RTR) Energy Recovery Ventilator EC Motor Option



**ABBREVIATIONS**  
 EA: Exhaust Air to outside  
 OA: Outside Air intake  
 RA: Room Air to be exhausted  
 FA: Fresh Air to inside  
 RTV: Rooftop Vertical RA & FA  
 RTR: Rooftop Vertical RA Only

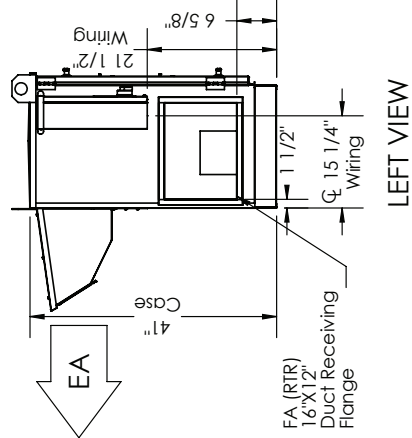
**INSTALLATION ORIENTATION**  
 Unit must be installed in orientation shown.

**NOTE:**  
 1. UNLESS OTHERWISE SPECIFIED, DIMENSIONS ARE ROUNDED TO THE NEAREST EIGHTH OF AN INCH.  
 2. SPECIFICATIONS MAY BE SUBJECT TO CHANGE WITHOUT NOTICE.

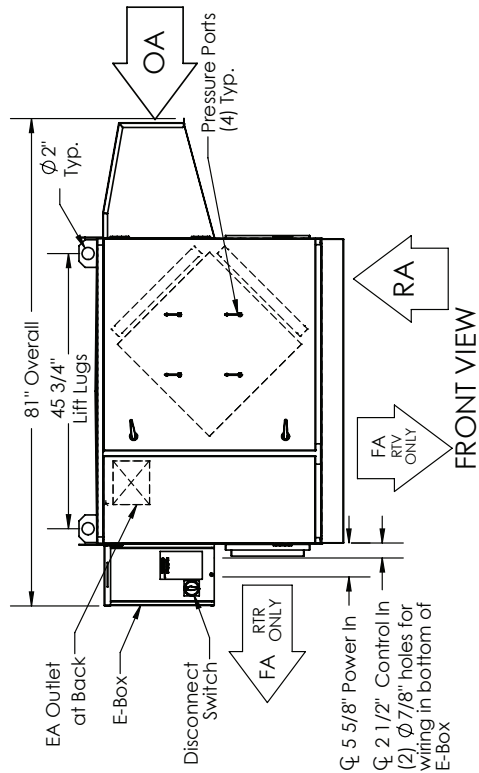


**TOP VIEW**

**TOP VIEW**

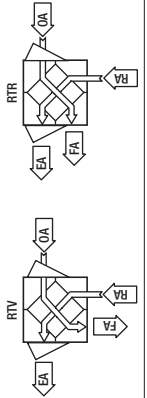


**LEFT VIEW**



**FRONT VIEW**

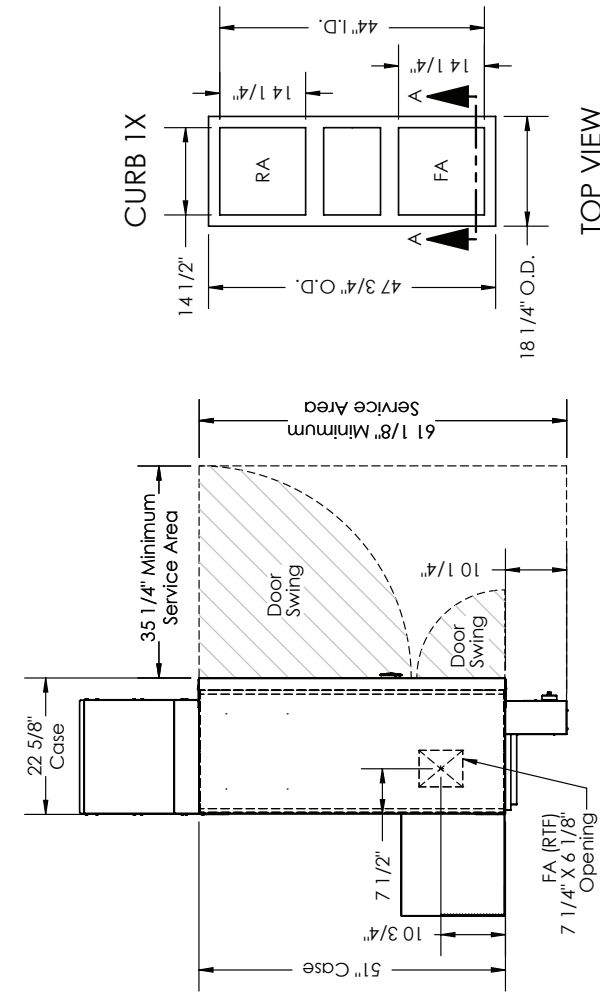
**RIGHT VIEW**



**UNIT MOUNTING & APPLICATION**  
 Must be mounted as shown. Airstreams can not be switched.



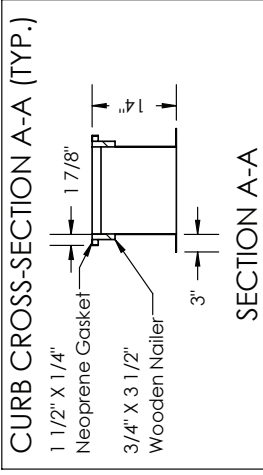
# HE1XRRT (RTH/RTF) Energy Recovery Ventilator EC Motor Option



**ABBREVIATIONS**  
 EA: Exhaust Air to outside  
 OA: Outside Air intake  
 RA: Room Air to be exhausted  
 FA: Fresh Air to inside  
 RTF: Rooftop Vertical FA Only  
 RTH: Rooftop Horizontal RA & FA

**INSTALLATION ORIENTATION**  
 Unit must be installed in orientation shown.

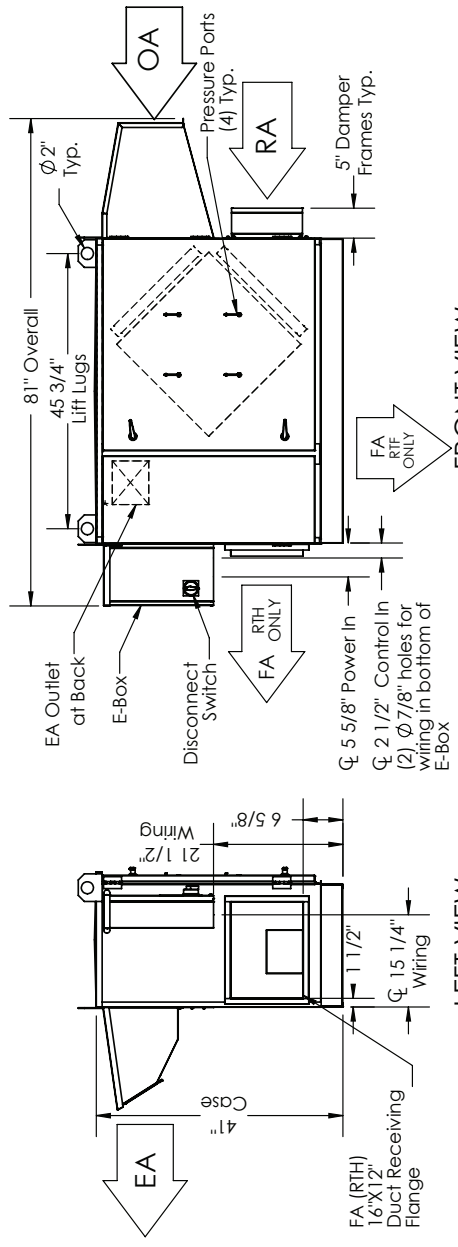
**NOTE:**  
 1. UNLESS OTHERWISE SPECIFIED, DIMENSIONS ARE ROUNDED TO THE NEAREST EIGHTH OF AN INCH.  
 2. SPECIFICATIONS MAY BE SUBJECT TO CHANGE WITHOUT NOTICE.



TOP VIEW

TOP VIEW

SECTION A-A



LEFT VIEW

FRONT VIEW

RIGHT VIEW

**AIRFLOW CONFIGURATION**  
 Available as shown:

**UNIT MOUNTING & APPLICATION**  
 Must be mounted as shown. Airstreams can not be switched.

