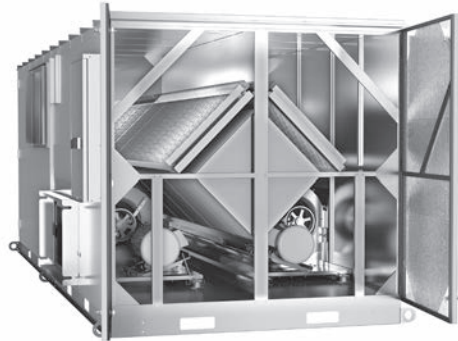


# LE 10XINH

## Energy Recovery Ventilator Standard



### INDOOR UNIT



LE10XINH shown

Download specification at:  
[renewaire.com/specifications](http://renewaire.com/specifications)

### SPECIFICATIONS

**Ventilation Type:**  
 Static plate, heat and humidity transfer

**Typical Airflow Range:** 2,500-11,000 CFM

**AHRI 1060 Certified Core:** Ten L125-G5

**Standard Features:**  
 TEFC Premium efficiency motors  
 Motor starters  
 Non-fused disconnect  
 24 VAC transformer/relay package  
 Rubber vibration isolators  
 Cross-core differential pressure ports

**Filters:** Total qty. 20, MERV 8: 20" x 25" x 2"

**Unit Dimensions & Weight:**  
 80 1/2" L x 205 1/2" W x 71 1/4" H  
 Modular (per module) 1,423-1,912 lbs., varies by option(s)  
 Assembled (1-piece) 2,858-3,799 lbs., varies by option(s)

**Max. Shipping Dimensions & Weight (on pallet):**  
 Modular (2-modules) 120" L x 90" W x 78" H  
 Module 1 - 2,132 lbs., Module 2 - 2,107 lbs.  
 Assembled (1-piece) 240" L x 90" W x 78" H - 4,239 lbs.

**Motor(s):**  
 Qty. 2, Belt drive blower/standard motor packages with choice of adjustable sheaves for low, medium or high blower speed. (see table below)

**Options:**  
 Spring vibration isolators  
 Onboard variable frequency drives (VFDs) - one or both airstreams  
 Shaft grounding ring on motors with VFDs  
 Fused disconnect  
 Integrated programmable controls - enhanced, premium  
 Class 1 low leakage motorized isolation dampers - OA, RA or both  
 Qty. 2, Factory mounted filter alarms - both airstreams  
 Double wall construction  
 Exterior paint - white, custom colors

**Accessories:**  
 Filters - MERV 13, 2" or 4"; MERV 8, 4" (shipped loose)  
 Digital time clock - wall mount (TC7D-W), in exterior enclosure (TC7D-E)  
 Carbon dioxide sensor/control - wall mount (CO2-W), duct mount (CO2-D)  
 IAQ sensor - wall mount (IAQ-W), duct mount (IAQ-D)  
 Motion occupancy sensor/control - ceiling mount (MC-C), wall mount (MC-W)  
 Smoke Detector - duct mount (SD-D)  
 Electric duct heater - EK series (1-175 kW)  
 Indirect gas-fired duct furnace - GH series (50-400 MBH), installed downstream of any fans

### AIRFLOW PERFORMANCE

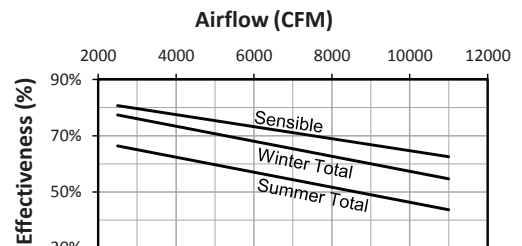
| Airflow CFM | External Static Pressure (in.w.g.) |                 |      |     |      |     |                |                  |      |     |                |     |                 |     |      |      |      |      |      |  |                   |  |  |
|-------------|------------------------------------|-----------------|------|-----|------|-----|----------------|------------------|------|-----|----------------|-----|-----------------|-----|------|------|------|------|------|--|-------------------|--|--|
|             | 0.00                               |                 | 0.25 |     | 0.50 |     | 0.75           |                  | 1.00 |     | 1.25           |     | 1.50            |     | 1.75 |      | 2.00 |      |      |  |                   |  |  |
|             | BHP                                | RPM             | BHP  | RPM | BHP  | RPM | BHP            | RPM              | BHP  | RPM | BHP            | RPM | BHP             | RPM | BHP  | RPM  | BHP  | RPM  |      |  |                   |  |  |
|             |                                    |                 |      |     |      |     | 3 HP LOW SPEED |                  |      |     | 3 HP MED SPEED |     | 3 HP HIGH SPEED |     |      |      |      |      |      |  |                   |  |  |
| 2500        |                                    |                 |      |     |      |     | 1.1            | 710              | 1.3  | 790 | 1.6            | 870 | 1.8             | 930 | 2.1  | 1000 | 2.4  | 1050 |      |  |                   |  |  |
| 3000        |                                    |                 |      |     | 1.0  | 640 | 1.3            | 730              | 1.5  | 810 | 1.8            | 880 | 2.0             | 950 | 2.3  | 1010 | 2.6  | 1070 |      |  |                   |  |  |
| 3500        |                                    |                 |      |     | 1.2  | 660 | 1.4            | 750              | 1.7  | 830 | 2.0            | 900 | 2.3             | 960 | 2.6  | 1020 | 2.9  | 1080 |      |  |                   |  |  |
| 4000        |                                    |                 |      |     | 1.4  | 680 | 1.6            | 770              | 1.9  | 840 | 2.2            | 910 | 2.5             | 980 | 2.9  | 1040 | 3.2  | 1100 |      |  |                   |  |  |
| 4500        |                                    |                 |      |     | 1.6  | 710 | 1.9            | 790              | 2.2  | 860 | 2.5            | 930 | 2.8             | 990 | 3.2  | 1050 | 3.5  | 1110 |      |  |                   |  |  |
| 5000        |                                    |                 |      | 1.6 | 670  | 1.9 | 740            | 2.1              | 810  | 2.5 | 880            | 2.8 | 940             | 3.1 | 1000 | 3.5  | 1060 | 3.9  | 1120 |  |                   |  |  |
| 5500        |                                    | 1.6             | 640  | 1.9 | 710  | 2.2 | 770            | 2.5              | 840  | 2.8 | 900            | 3.1 | 960             | 3.5 | 1020 | 3.8  | 1080 | 4.2  | 1130 |  | 5 HP HIGH SPEED   |  |  |
| 6000        |                                    | 2.0             | 690  | 2.2 | 750  | 2.5 | 810            | 2.8              | 870  | 3.1 | 920            | 3.5 | 980             | 3.9 | 1040 | 4.2  | 1090 | 4.6  | 1150 |  |                   |  |  |
| 6500        | 3 HP LOW SPEED                     | 2.4             | 740  | 2.6 | 790  | 2.9 | 850            | 3.2              | 900  | 3.6 | 950            | 3.9 | 1000            | 4.3 | 1060 | 4.7  | 1110 | 5.1  | 1160 |  | 7.5 HP MED SPEED  |  |  |
| 7000        |                                    | 2.8             | 790  | 3.1 | 830  | 3.4 | 880            | 3.7              | 930  | 4.0 | 980            | 4.4 | 1030            | 4.8 | 1080 | 5.2  | 1130 | 5.6  | 1170 |  |                   |  |  |
| 7500        | 5 HP LOW SPEED                     | 3.3             | 830  | 3.6 | 880  | 3.9 | 920            | 4.2              | 970  | 4.6 | 1010           | 4.9 | 1050            | 5.3 | 1100 | 5.7  | 1140 | 6.1  | 1190 |  |                   |  |  |
| 8000        |                                    | 3.9             | 880  | 4.2 | 920  | 4.5 | 960            | 4.8              | 1000 | 5.1 | 1040           | 5.5 | 1080            | 5.9 | 1120 | 6.3  | 1160 | 6.7  | 1200 |  | 7.5 HP HIGH SPEED |  |  |
| 8500        | 5 HP MED SPEED                     | 4.5             | 930  | 4.8 | 960  | 5.1 | 1000           | 5.4              | 1030 | 5.8 | 1070           | 6.1 | 1100            | 6.5 | 1140 | 6.9  | 1180 | 7.3  | 1210 |  |                   |  |  |
| 9000        | 7.5 HP LOW                         | 5.2             | 970  | 5.5 | 1000 | 5.8 | 1030           | 6.1              | 1060 | 6.4 | 1100           | 6.8 | 1130            | 7.1 | 1160 | 7.5  | 1190 | 7.9  | 1220 |  |                   |  |  |
| 9500        |                                    | 5.9             | 1010 | 6.2 | 1040 | 6.5 | 1060           | 6.8              | 1090 | 7.1 | 1120           | 7.5 | 1150            | 7.8 | 1180 | 8.2  | 1210 | 8.5  | 1230 |  |                   |  |  |
| 10000       | SPEED                              | 6.7             | 1040 | 7.0 | 1070 | 7.3 | 1090           | 7.6              | 1120 | 7.9 | 1140           | 8.2 | 1170            | 8.5 | 1190 | 8.9  | 1220 | 9.2  | 1240 |  |                   |  |  |
| 10500       | 7.5 HP MED SPEED                   | 7.5             | 1080 | 7.8 | 1100 | 8.1 | 1120           | 8.4              | 1140 | 8.7 | 1160           | 9.0 | 1190            | 9.3 | 1210 | 9.6  | 1230 | 10.0 | 1250 |  | 10 HP HIGH SPEED  |  |  |
| 11000       |                                    | 8.4             | 1100 | 8.6 | 1120 | 8.9 | 1140           | 9.2              | 1160 | 9.5 | 1180           | 9.8 | 1200            |     |      |      |      |      |      |  |                   |  |  |
|             |                                    | 10 HP MED SPEED |      |     |      |     |                | 10 HP HIGH SPEED |      |     |                |     |                 |     |      |      |      |      |      |  |                   |  |  |

Note: Airflow performance includes effect of clean, standard filter supplied with unit.

### ELECTRICAL DATA

| Standard Electrical Specifications |         |    |        |               |                |                                    | Optional Factory Installed VFD Electrical Specifications |                |                                    |
|------------------------------------|---------|----|--------|---------------|----------------|------------------------------------|--|----------------|------------------------------------|
| HP                                 | Volts   | HZ | Phase  | FLA per motor | Min. Cir. Amps | Max. Overcurrent Protection Device | FLA per motor  | Min. Cir. Amps | Max. Overcurrent Protection Device |
| 3.0                                | 208-230 | 60 | Single | 14.7-14       | 33.1           | 40                                 | 9.38-8.48  | 40.2           | 45                                 |
| 3.0                                | 208-230 | 60 | Three  | 9.38-8.48     | 21.1           | 25                                 | 9.38-8.48  | 23.2           | 25                                 |
|                                    | 460     | 60 | Three  | 4.24          | 9.5            | 15                                 | 4.24   | 10.5           | 15                                 |
|                                    | 575     | 60 | Three  | 3.3           | 7.4            | 15                                 | 3.3  | 8.2            | 15                                 |
| 5.0                                | 208-230 | 60 | Three  | 14.5-13.4     | 32.6           | 45                                 | 14.5-13.4  | 35.9           | 45                                 |
|                                    | 460     | 60 | Three  | 6.7           | 15.1           | 20                                 | 6.7  | 16.6           | 20                                 |
|                                    | 575     | 60 | Three  | 5.3           | 11.9           | 15                                 | 5.3  | 13.1           | 15                                 |
| 7.5                                | 208-230 | 60 | Three  | 21.0-19.0     | 47.3           | 60                                 | 21.0-19.0  | 52.0           | 60                                 |
|                                    | 460     | 60 | Three  | 9.5           | 21.4           | 25                                 | 9.5  | 23.5           | 25                                 |
|                                    | 575     | 60 | Three  | 7.6           | 17.1           | 20                                 | 7.6  | 18.8           | 20                                 |
| 10.0                               | 208-230 | 60 | Three  | 27.0-24.4     | 60.8           | 80                                 | 27.0-24.4  | 66.8           | 80                                 |
|                                    | 460     | 60 | Three  | 12.2          | 27.5           | 35                                 | 12.2   | 30.2           | 35                                 |
|                                    | 575     | 60 | Three  | 9.76          | 22.0           | 30                                 | 9.76   | 24.2           | 30                                 |

### CORE PERFORMANCE



At AHRI 1060 standard conditions.  
 See all AHRI certified ratings at [www.ahrinet.org](http://www.ahrinet.org).

Specifications may be subject to change without notice.



# LE10XINH Energy Recovery Ventilator Standard

## ABBREVIATIONS

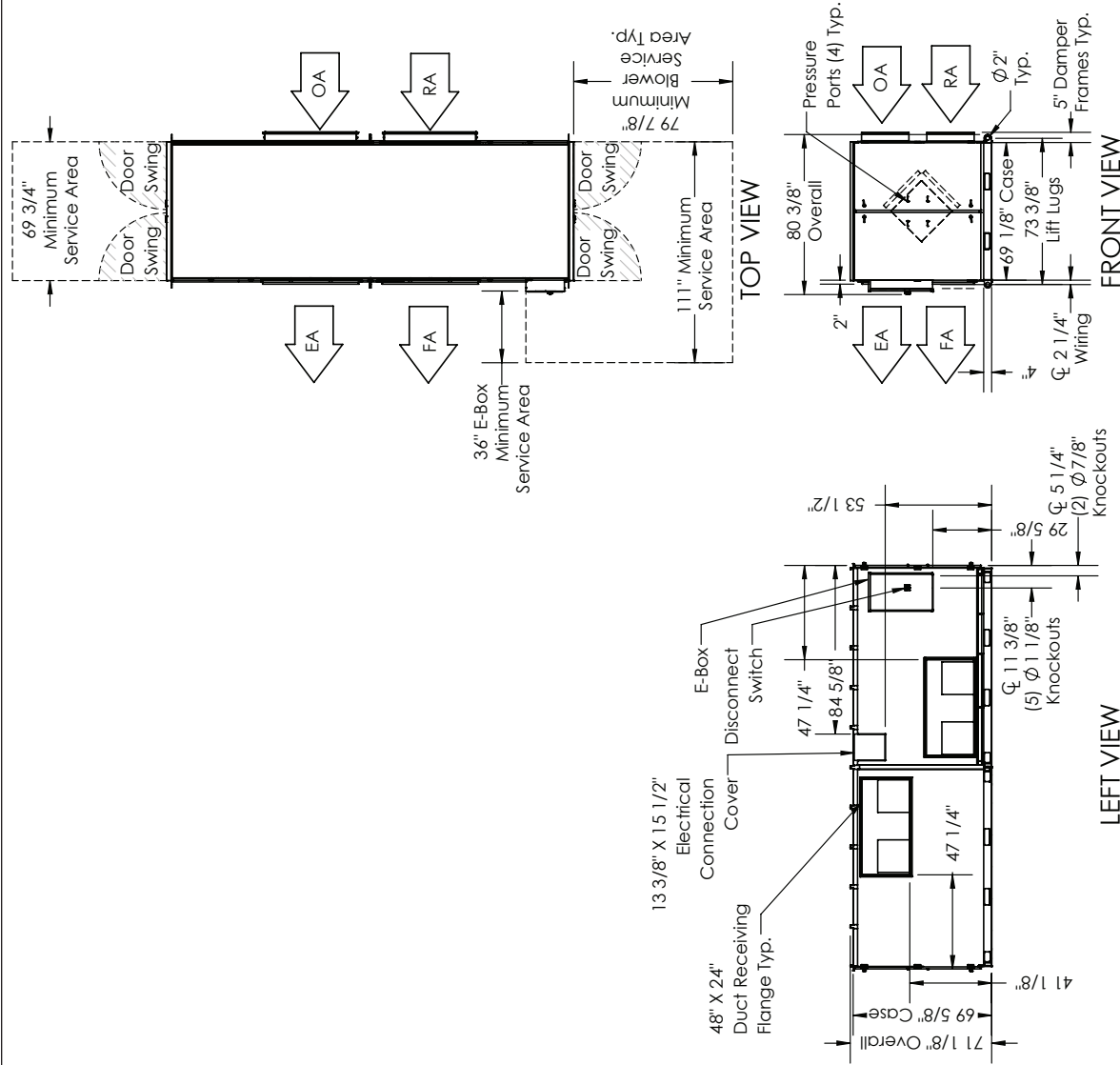
- EA: Exhaust Air to outside
- OA: Outside Air Intake
- RA: Room Air to be exhausted
- FA: Fresh Air to inside

## INSTALLATION ORIENTATION

Unit must be installed in orientation shown.

## NOTE

1. UNLESS OTHERWISE SPECIFIED, DIMENSIONS ARE ROUNDED TO THE NEAREST EIGHTH OF AN INCH.
2. SPECIFICATIONS MAY BE SUBJECT TO CHANGE WITHOUT NOTICE.
3. MIN. DUCT CLEARANCE FROM DAMPER BLADES WHEN FULLY OPENED TO BE 2". SMACNA RULES APPLY.



**AIRFLOW CONFIGURATION**  
Available as shown in dimension drawing.

**UNIT MOUNTING & APPLICATION**  
Must be mounted as shown. RA/EA airstream can be switched with OA/FA airstream unless certain options are selected.

