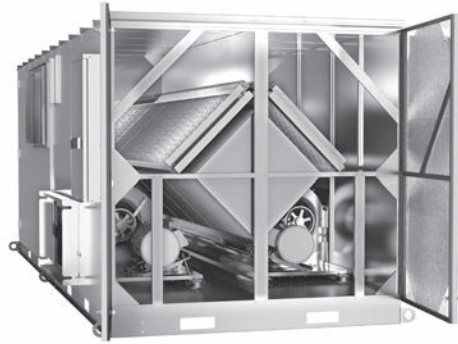


# LE 10XINV

## Energy Recovery Ventilator Standard



### INDOOR UNIT



Download specification at:  
renewaire.com/specifications

### SPECIFICATIONS

**Ventilation Type:**  
Static plate, heat and humidity transfer

**Typical Airflow Range:** 2,500-11,000 CFM

**AHRI 1060 Certified Core:** Ten L125-G5

**Standard Features:**  
TEFC Premium efficiency motors  
Motor starters  
Non-fused disconnect  
24 VAC transformer/relay package  
Rubber vibration isolators  
Cross-core differential pressure ports

**Filters:** Total qty. 20, MERV 8: 20" x 25" x 2"

**Unit Dimensions & Weight:**  
81 1/2" L x 205 1/2" W x 71 1/4" H  
Modular (per module) 1,127-2,222 lbs., varies by option(s)  
Assembled (1-piece) 2,858-3,788 lbs., varies by option(s)

**Max. Shipping Dimensions & Weight (on pallet):**  
Modular (2-modules) 120" L x 90" W x 78" H  
Module 1 - 2,442 lbs., Module 2 - 1,792 lbs.  
Assembled (1-piece) 240" L x 90" W x 78" H - 4,228 lbs.

**Motor(s):** Qty. 2, Belt drive blower/standard motor packages with choice of adjustable sheaves for low, medium or high blower speed. (see table below)

**Options:**  
Spring vibration isolators  
Onboard variable frequency drives (VFDs) - one or both airstreams  
Shaft grounding ring on motors with VFDs  
Fused disconnect  
Integrated programmable controls - enhanced, premium  
Class 1 low leakage motorized isolation dampers - OA, RA or both  
Qty. 2, Factory mounted filter alarms - both airstreams  
Double wall construction  
Exterior paint - white, custom colors

**Accessories:**  
Filters - MERV 13, 2" or 4"; MERV 8, 4" (shipped loose)  
Digital time clock - wall mount (TC7D-W), in exterior enclosure (TC7D-E)  
Carbon dioxide sensor/control - wall mount (CO2-W), duct mount (CO2-D)  
IAQ sensor - wall mount (IAQ-W), duct mount (IAQ-D)  
Motion occupancy sensor/control - ceiling mount (MC-C), wall mount (MC-W)  
Smoke Detector - duct mount (SD-D)  
Electric duct heater - EK series (1-175 kW)  
Indirect gas-fired duct furnace - GH series (50-400 MBH), installed downstream of any fans

### AIRFLOW PERFORMANCE

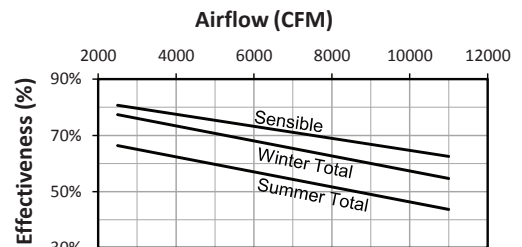
Airflow CFM	External Static Pressure (in.w.g.)																				
	0.00		0.25		0.50		0.75		1.00		1.25		1.50		1.75		2.00				
	BHP	RPM	BHP	RPM	BHP	RPM	BHP	RPM	BHP	RPM	BHP	RPM	BHP	RPM	BHP	RPM	BHP	RPM			
							3 HP LOW SPEED				3 HP MED SPEED		3 HP HIGH SPEED								
2500							1.1	710	1.3	790	1.6	870	1.8	930	2.1	1000	2.4	1050			
3000							1.2	660	1.4	750	1.7	830	2.0	900	2.3	960	2.6	1020	2.9	1080	
3500							1.4	680	1.6	770	1.9	840	2.2	910	2.5	980	2.9	1040	3.2	1100	
4000							1.6	710	1.9	790	2.2	860	2.5	930	2.8	990	3.2	1050	3.5	1110	
4500							1.9	740	2.1	810	2.5	880	2.8	940	3.1	1000	3.5	1060	3.9	1120	
5000			1.6	670	1.9	740	2.2	770	2.5	840	2.8	900	3.1	960	3.5	1020	3.8	1080	4.2	1130	5 HP HIGH SPEED
5500			1.6	640	1.9	710	2.2	770	2.5	840	2.8	900	3.1	960	3.5	1020	3.8	1080	4.2	1130	
6000	3 HP LOW SPEED	2.0	690	2.2	750	2.5	810	2.8	870	3.1	920	3.5	980	3.9	1040	4.2	1090	4.6	1150		
6500		2.4	740	2.6	790	2.9	850	3.2	900	3.6	950	3.9	1000	4.3	1060	4.7	1110	5.1	1160	7.5 HP MED SPEED	
7000	5 HP LOW SPEED	2.8	790	3.1	830	3.4	880	3.7	930	4.0	980	4.4	1030	4.8	1080	5.2	1130	5.6	1170		
7500		3.3	830	3.6	880	3.9	920	4.2	970	4.6	1010	4.9	1050	5.3	1100	5.7	1140	6.1	1190	7.5 HP HIGH SPEED	
8000	3.9	880	4.2	920	4.5	960	4.8	1000	5.1	1040	5.5	1080	5.9	1120	6.3	1160	6.7	1200			
8500	5 HP MED SPEED	4.5	930	4.8	960	5.1	1000	5.4	1030	5.8	1070	6.1	1100	6.5	1140	6.9	1180	7.3	1210		
9000	7.5 HP LOW SPEED	5.2	970	5.5	1000	5.8	1030	6.1	1060	6.4	1100	6.8	1130	7.1	1160	7.5	1190	7.9	1220	10 HP HIGH SPEED	
9500		5.9	1010	6.2	1040	6.5	1060	6.8	1090	7.1	1120	7.5	1150	7.8	1180	8.2	1210	8.5	1230		
10000		6.7	1040	7.0	1070	7.3	1090	7.6	1120	7.9	1140	8.2	1170	8.5	1190	8.9	1220	9.2	1240		
10500	7.5 HP MED SPEED	7.5	1080	7.8	1100	8.1	1120	8.4	1140	8.7	1160	9.0	1190	9.3	1210	9.6	1230	10.0	1250		
11000							8.4	1100	8.6	1120	8.9	1140	9.2	1160	9.5	1180	9.8	1200			
							10 HP MED SPEED						10 HP HIGH SPEED								

Note: Airflow performance includes effect of clean, standard filter supplied with unit.

### ELECTRICAL DATA

Standard Electrical Specifications							Optional Factory Installed VFD Electrical Specifications		
HP	Volts	HZ	Phase	FLA per motor	Min. Cir. Amps	Max. Overcurrent Protection Device	FLA per motor	Min. Cir. Amps	Max. Overcurrent Protection Device
3.0	208-230	60	Single	14.7-14	33.1	40	9.38-8.48	40.2	45
	208-230 460 575	60 60 60	Three Three Three	9.38-8.48 4.24 3.3	21.1 9.5 7.4	25 15 15	9.38-8.48 4.24 3.3	23.2 10.5 8.2	25 15 15
5.0	208-230	60	Three	14.5-13.4	32.6	45	14.5-13.4	35.9	45
	460	60	Three	6.7	15.1	20	6.7	16.6	20
	575	60	Three	5.3	11.9	15	5.3	13.1	15
7.5	208-230	60	Three	21.0-19.0	47.3	60	21.0-19.0	52.0	60
	460	60	Three	9.5	21.4	25	9.5	23.5	25
	575	60	Three	7.6	17.1	20	7.6	18.8	20
10.0	208-230	60	Three	27.0-24.4	60.8	80	27.0-24.4	66.8	80
	460	60	Three	12.2	27.5	35	12.2	30.2	35
	575	60	Three	9.76	22.0	30	9.76	24.2	30

### CORE PERFORMANCE



At AHRI 1060 standard conditions.  
See all AHRI certified ratings at www.ahrinet.org.

Specifications may be subject to change without notice.

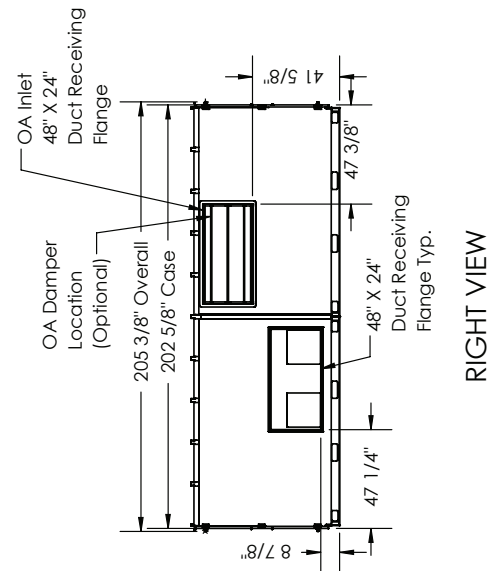
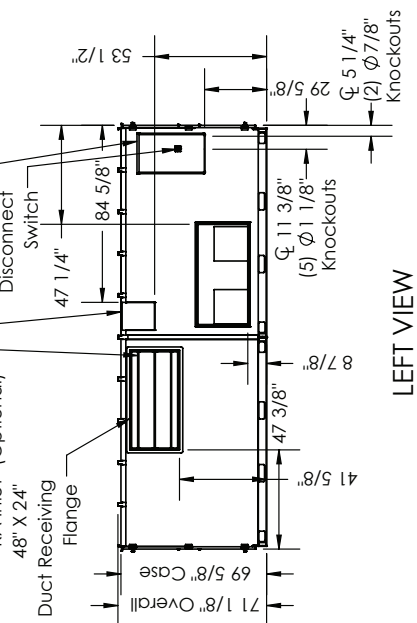
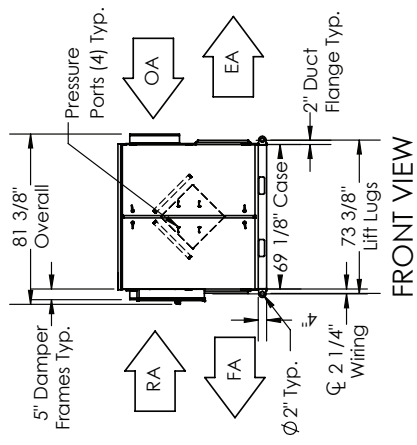
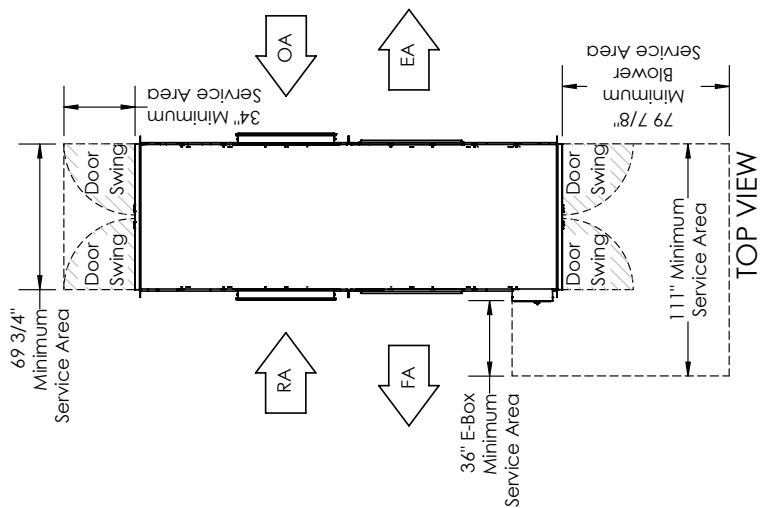


# LE10XINV Energy Recovery Ventilator Standard

**ABBREVIATIONS**  
 EA: Exhaust Air to outside  
 OA: Outside Air Intake  
 RA: Room Air to be exhausted  
 FA: Fresh Air to inside

**INSTALLATION ORIENTATION**  
 Unit must be installed in orientation shown.

**NOTE**  
 1. UNLESS OTHERWISE SPECIFIED, DIMENSIONS ARE ROUNDED TO THE NEAREST EIGHTH OF AN INCH.  
 2. SPECIFICATIONS MAY BE SUBJECT TO CHANGE WITHOUT NOTICE.  
 3. DUCT CLEARANCE FROM DAMPER BLADE WHEN FULLY OPENED TO BE 2". SMAGNA RULES APPLY.



**AIRFLOW CONFIGURATION**  
 Available as shown in dimension drawing.

**UNIT MOUNTING & APPLICATION**  
 Must be mounted as shown. RA/EA airstream can be switched with OA/FA airstream unless certain options are selected.