

# LE 6XINH

**INDOOR UNIT**



LE6XINH shown

Download specification at:  
renewaire.com/specifications

## Energy Recovery Ventilator Standard



**SPECIFICATIONS**

**Ventilation Type:**

Static plate, heat and humidity transfer

**Typical Airflow Range:** 1,500-6,600 CFM

**AHRI 1060 Certified Core:** Six L125-G5

**Standard Features:**

- TEFC Premium efficiency motors
- Motor starters
- Non-fused disconnect
- 24 VAC transformer/relay package
- Cross-core differential pressure ports

**Filters:** Total qty. 12, MERV 8: 20" x 25" x 2"

**Unit Dimensions & Weight:**

- 81 1/2" L x 125 1/2" W x 71 1/4" H
- Modular (per module) 943-1,367 lbs., varies by option(s)
- Assembled (1-piece) 1,975-2,630 lbs., varies by option(s)

**Max. Shipping Dimensions & Weight (on pallet):**

- Modular (2-modules) 80" L x 90" W x 78" H
- Module 1 - 1,508 lbs., Module 2 - 1,406 lbs.
- Assembled (1-piece) 160" L x 90" W x 78" H - 2,630 lbs.

**Motor(s):**

- Qty. 2, Belt drive blower/standard motor packages with choice of adjustable sheaves for low, medium or high blower speed (see table below)

**Options:**

- Spring vibration isolators
- Onboard variable frequency drives (VFDs) - one or both airstreams
- Shaft grounding ring on motors with VFDs
- Fused disconnect
- Integrated programmable controls - enhanced, premium
- Class 1 low leakage motorized isolation dampers - OA, RA or both airstreams
- Qty. 2, Factory mounted filter alarms - both airstreams
- Double wall construction
- Exterior paint - white, custom colors

**Accessories:**

- Filters - MERV 13, 2" or 4"; MERV 8, 4" (shipped loose)
- Digital time clock - wall mount (TC7D-W), in exterior enclosure (TC7D-E)
- Carbon dioxide sensor/control - wall mount (CO2-W), duct mount (CO2-D)
- IAQ sensor - wall mount (IAQ-W), duct mount (IAQ-D)
- Motion occupancy sensor/control - ceiling mount (MC-C), wall mount (MC-W)
- Smoke Detector - duct mount (SD-D)
- Electric duct heater - EK series (1-175 kW)
- Indirect gas-fired duct furnace - GH series (50-400 MBH), installed downstream of any fans

**AIRFLOW PERFORMANCE**

Airflow CFM	External Static Pressure (in.w.g.)																	
	0.00		0.25		0.50		0.75		1.00		1.25		1.50		1.75		2.00	
	BHP	RPM	BHP	RPM	BHP	RPM	BHP	RPM	BHP	RPM	BHP	RPM	BHP	RPM	BHP	RPM	BHP	RPM
1500	3 HP LOW SPEED																	
2000	3 HP LOW SPEED																	
2500	3 HP LOW SPEED																	
3000	3 HP LOW SPEED																	
3500	3 HP LOW SPEED																	
3750	3 HP LOW SPEED																	
4000	3 HP LOW SPEED																	
4250	3 HP LOW SPEED																	
4500	3 HP LOW SPEED																	
4750	3 HP LOW SPEED																	
5000	3 HP LOW SPEED																	
5250	3 HP LOW SPEED																	
5500	3 HP LOW SPEED																	
5750	3 HP LOW SPEED																	
6000	3 HP LOW SPEED																	
6250	3 HP LOW SPEED																	
6500	3 HP LOW SPEED																	
6600	3 HP LOW SPEED																	
7.5 HP LOW SPEED																		
7.5 HP MED SPEED																		

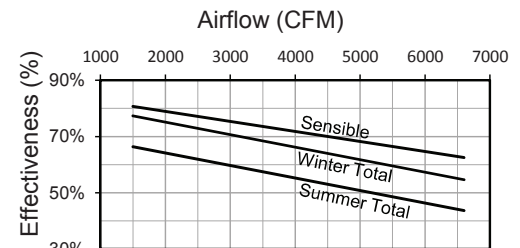
Note: Airflow performance includes effect of clean, standard filter supplied with unit.

**ELECTRICAL DATA**

Standard Electrical Specifications							Optional Factory Installed VFD Electrical Specifications		
HP	Volts	HZ	Phase	FLA per motor	Min. Cir. Amps	Max. Overcurrent Protection Device	FLA per motor	Min. Cir. Amps	Max. Overcurrent Protection Device
3.0	208-230	60	Single	14.7-14	33.1	40	9.38-8.48	40.2	45
	208-230	60	Three	9.38-8.48	21.1	25	9.38-8.48	23.2	25
	460 575	60 60	Three Three	4.24 3.3	9.5 7.4	15 15	4.24 3.3	10.5 8.2	15 15
5.0	208-230	60	Three	14.5-13.4	32.6	45	14.5-13.4	35.9	45
	460	60	Three	6.7	15.1	20	6.7	16.6	20
	575	60	Three	5.3	11.9	15	5.3	13.1	15
7.5	208-230	60	Three	21.0-19.0	47.3	60	21.0-19.0	52.0	60
	460	60	Three	9.5	21.4	25	9.5	23.5	25
	575	60	Three	7.6	17.1	20	7.6	18.8	20

Specifications may be subject to change without notice.

**CORE PERFORMANCE**



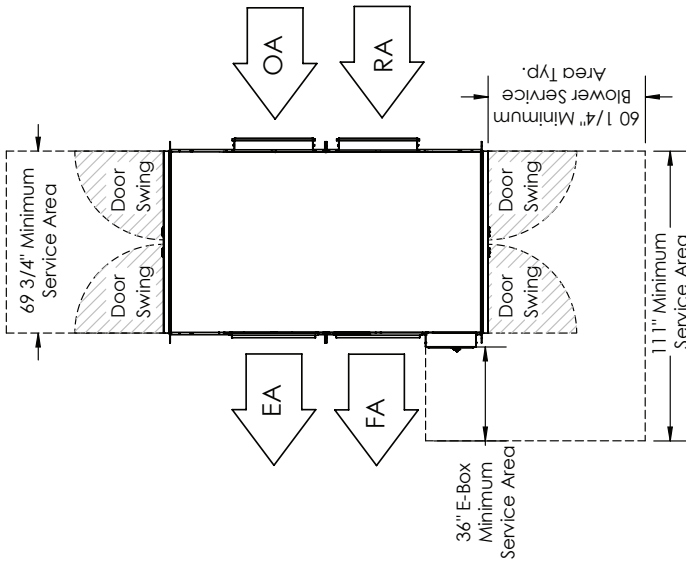
At AHRI 1060 standard conditions.  
See all AHRI certified ratings at www.ahrinet.org.

# LE6XINH Energy Recovery Ventilator Standard

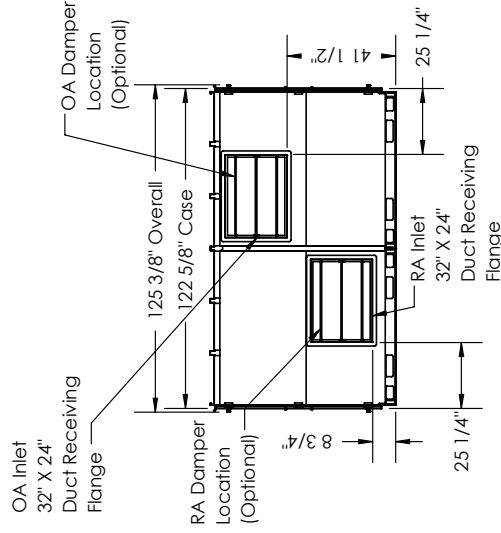
**ABBREVIATIONS**  
 EA: Exhaust Air to outside  
 OA: Outside Air Intake  
 RA: Room Air to be exhausted  
 FA: Fresh Air to inside

**INSTALLATION ORIENTATION**  
 Unit must be installed in orientation shown.

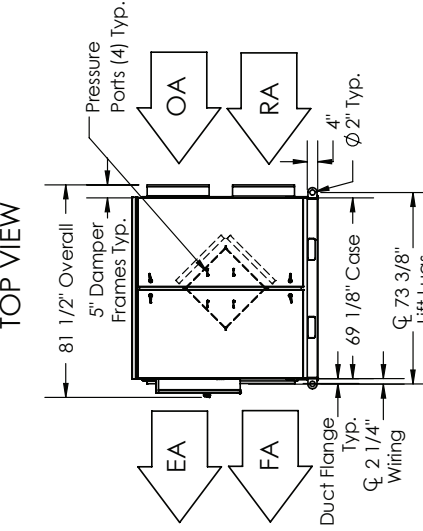
**NOTE**  
 1. UNLESS OTHERWISE SPECIFIED, DIMENSIONS ARE ROUNDED TO THE NEAREST EIGHTH OF AN INCH.  
 2. SPECIFICATIONS MAY BE SUBJECT TO CHANGE WITHOUT NOTICE.  
 3. MIN. DUCT CLEARANCE FROM DAMPER BLADES WHEN FULLY OPENED TO BE 2". SMACNA RULES APPLY.



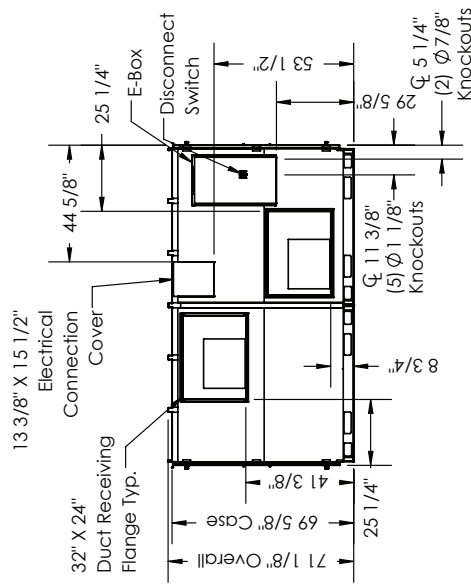
TOP VIEW



RIGHT VIEW



FRONT VIEW



LEFT VIEW

**AIRFLOW CONFIGURATION**  
 Available as shown in dimension drawing.



**UNIT MOUNTING & APPLICATION**  
 Must be mounted as shown. RA/EA airstream can be switched with OA/FA airstream unless certain options are selected.