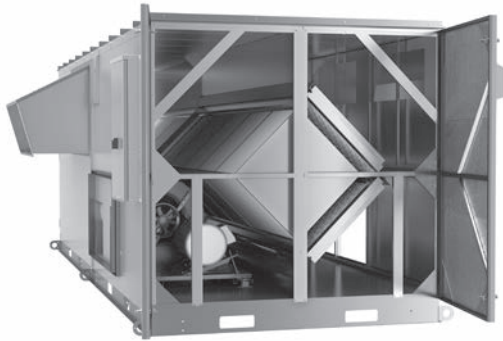


# LE 6XRT

## Energy Recovery Ventilator Standard



### ROOFTOP UNIT



LE10XRT shown

Download specification at:  
[renewaire.com/specifications](http://renewaire.com/specifications)

### SPECIFICATIONS

**Ventilation Type:**  
 Static plate, heat and humidity transfer

**Typical Airflow Range:** 1,500-6,600 CFM

**AHRI 1060 Certified Core:** Six L125-G5

**Standard Features:**  
 TEFC Premium efficiency motors  
 Motor starters  
 Non-fused disconnect  
 24 VAC transformer/relay package  
 Cross-core differential pressure ports

**Filters:**  
 Total qty. 12, MERV 8: 20" x 25" x 2"

**Unit Dimensions & Weight:**  
 111 1/4" L x 125 1/2" W x 71 1/4" H  
 Modular (per module) 1,069-1,461 lbs., varies by option(s)  
 Assembled (1-piece) 2,086-2,753 lbs., varies by option(s)

**Max. Shipping Dimensions & Weight (on pallet):**  
 Modular (2-modules) 80" L x 90" W x 78" H  
 Module 1 - 1,602 lbs., Module 2 - 1,491 lbs.  
 Assembled (1-piece) 160" L x 90" W x 78" H - 3,035 lbs.

**Motor(s):**  
 Qty. 2, Belt drive blower/standard motor packages with choice of adjustable sheaves for low, medium or high blower speed (see table below)

**Options:**  
 Spring vibration isolators  
 Onboard variable frequency drives (VFDs) - one or both airstreams  
 Shaft grounding ring on motors with VFDs  
 Fused disconnect  
 Integrated programmable controls - enhanced, premium  
 Class 1 low leakage motorized isolation dampers - OA, RA or both airstreams  
 Qty. 2, Factory mounted filter alarms - both airstreams  
 Double wall construction  
 Exterior paint - white, custom colors

**Accessories:**  
 Filters - MERV 13, 2" or 4"; MERV 8, 4" (shipped loose)  
 Roof curb - standard 14"  
 Curb wind clip  
 Engineered combo curb for Carrier RTU  
 Engineered combo curb for Trane RTU  
 Digital time clock - wall mount (TC7D-W), in exterior enclosure (TC7D-E)  
 Carbon dioxide sensor/control - wall mount (CO2-W), duct mount (CO2-D)  
 IAQ sensor - wall mount (IAQ-W), duct mount (IAQ-D)  
 Motion occupancy sensor/control - ceiling mount (MC-C), wall mount (MC-W)  
 Smoke Detector - duct mount (SD-D)  
 Electric duct heater - EK series (1-175 kW); designed for indoor ductwork installation only  
 Indirect gas-fired duct furnace - GH series (50-400 MBH), installed downstream of any fans

### AIRFLOW PERFORMANCE

Airflow CFM	External Static Pressure (in.w.g.)																	
	0.00		0.25		0.50		0.75		1.00		1.25		1.50		1.75		2.00	
	BHP	RPM	BHP	RPM	BHP	RPM	BHP	RPM	BHP	RPM	BHP	RPM	BHP	RPM	BHP	RPM	BHP	RPM
1500	3 HP LOW SPEED																	
2000	3 HP MED SPEED																	
2500	3 HP HIGH SPEED																	
3000	5 HP MED																	
3500	5 HP HIGH SPEED																	
3750	5 HP HIGH SPEED																	
4000	5 HP HIGH SPEED																	
4250	5 HP HIGH SPEED																	
4500	5 HP HIGH SPEED																	
4750	5 HP HIGH SPEED																	
5000	5 HP HIGH SPEED																	
5250	5 HP HIGH SPEED																	
5500	5 HP HIGH SPEED																	
5750	5 HP HIGH SPEED																	
6000	5 HP HIGH SPEED																	
6250	5 HP HIGH SPEED																	
6500	5 HP HIGH SPEED																	
6600	5 HP HIGH SPEED																	
7.5 HP LOW SPEED																		
7.5 HP MED SPEED																		

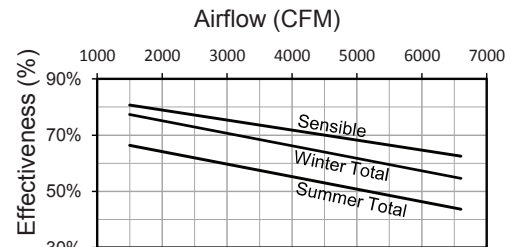
Note: Airflow performance includes effect of clean, standard filter supplied with unit.

### ELECTRICAL DATA

Standard Electrical Specifications							Optional Factory Installed VFD Electrical Specifications		
HP	Volts	HZ	Phase	FLA per motor	Min. Cir. Amps	Max. Overcurrent Protection Device	FLA per motor	Min. Cir. Amps	Max. Overcurrent Protection Device
3.0	208-230	60	Single	14.7-14	33.1	40	9.38-8.48	40.2	45
3.0	208-230	60	Three	9.38-8.48	21.1	25	9.38-8.48	23.2	25
	460	60	Three	4.24	9.5	15	4.24	10.5	15
	575	60	Three	3.3	7.4	15	3.3	8.2	15
5.0	208-230	60	Three	14.5-13.4	32.6	45	14.5-13.4	35.9	45
	460	60	Three	6.7	15.1	20	6.7	16.6	20
	575	60	Three	5.3	11.9	15	5.3	13.1	15
7.5	208-230	60	Three	21.0-19.0	47.3	60	21.0-19.0	52.0	60
	460	60	Three	9.5	21.4	25	9.5	23.5	25
	575	60	Three	7.6	17.1	20	7.6	18.8	20

Specifications may be subject to change without notice.

### CORE PERFORMANCE



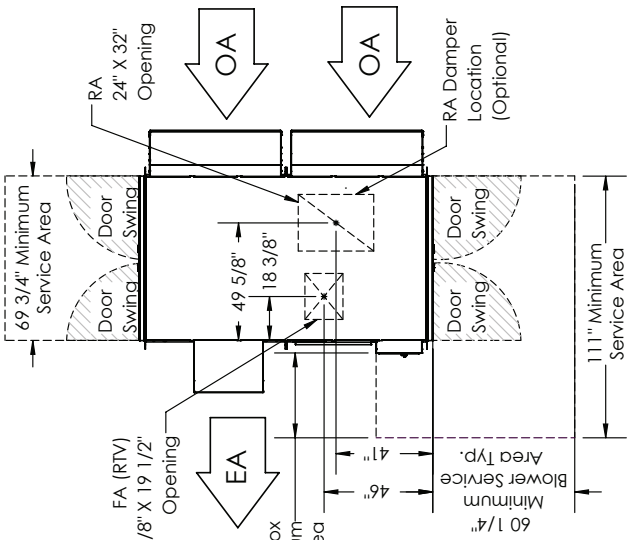
At AHRI 1060 standard conditions.  
 See all AHRI certified ratings at [www.ahrinet.org](http://www.ahrinet.org).

# LE6XRT (RTV/RTR) Energy Recovery Ventilator Standard

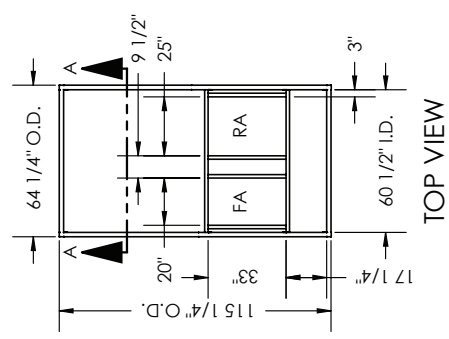
**ABBREVIATIONS**  
 EA: Exhaust Air to outside  
 OA: Outside Air intake  
 RA: Room Air to be exhausted  
 FA: Fresh Air to inside  
 RTV: Rooftop Vertical RA & FA  
 RTR: Rooftop Vertical RA Only

**INSTALLATION ORIENTATION**  
 Unit must be installed in orientation shown.

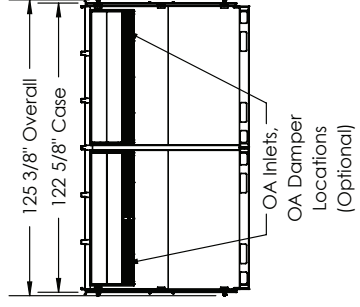
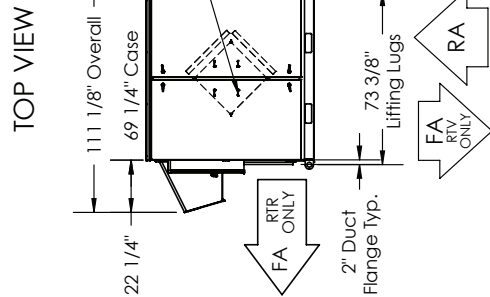
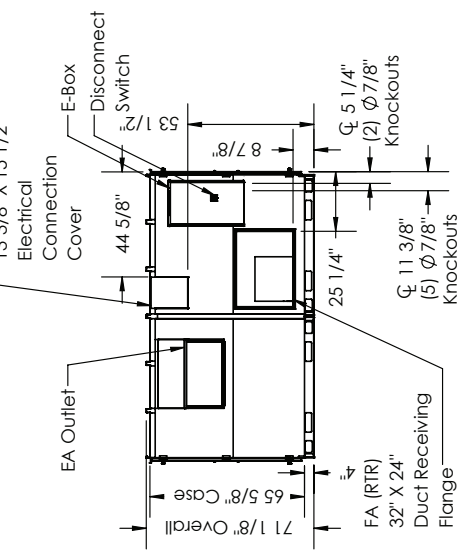
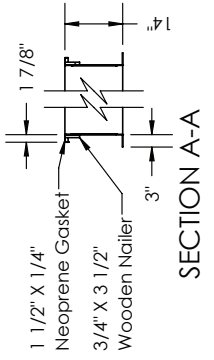
**NOTE:**  
 1. UNLESS OTHERWISE SPECIFIED, DIMENSIONS ARE ROUNDED TO THE NEAREST EIGHTH OF AN INCH.  
 2. SPECIFICATIONS MAY BE SUBJECT TO CHANGE WITHOUT NOTICE.



**CURB LE6X**



**CURB CROSS-SECTION A-A (TYP.)**

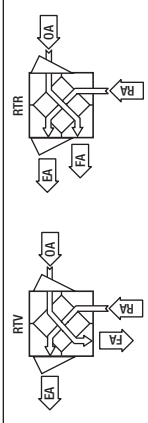


**RIGHT VIEW**

**FRONT VIEW**

**LEFT VIEW**

**AIRFLOW CONFIGURATION**  
 Available as shown:



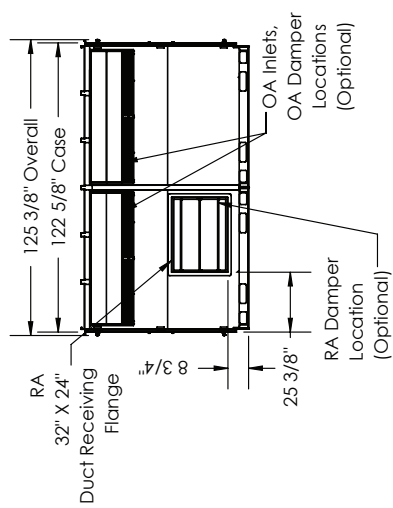
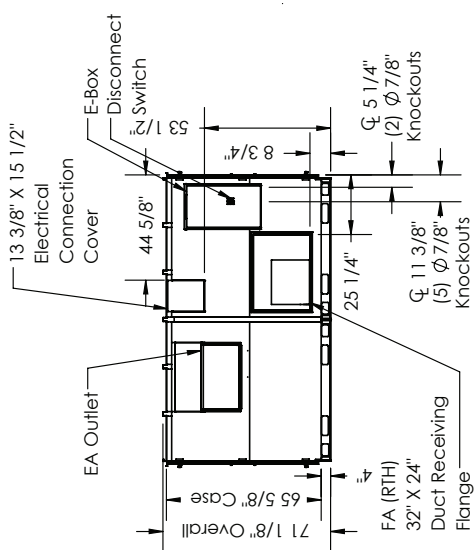
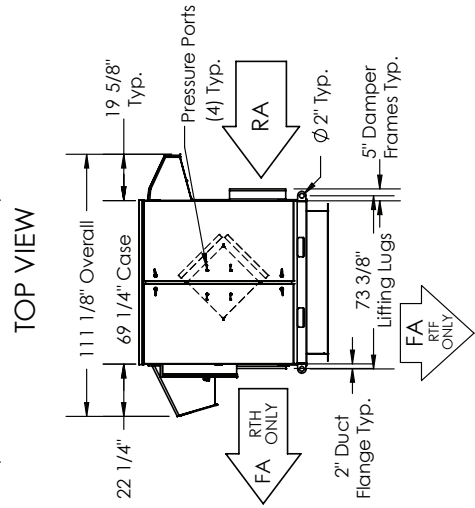
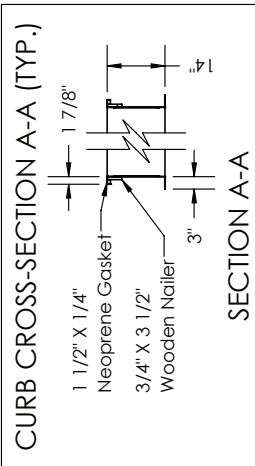
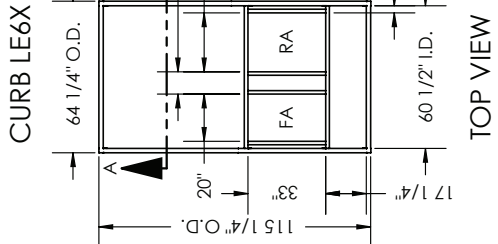
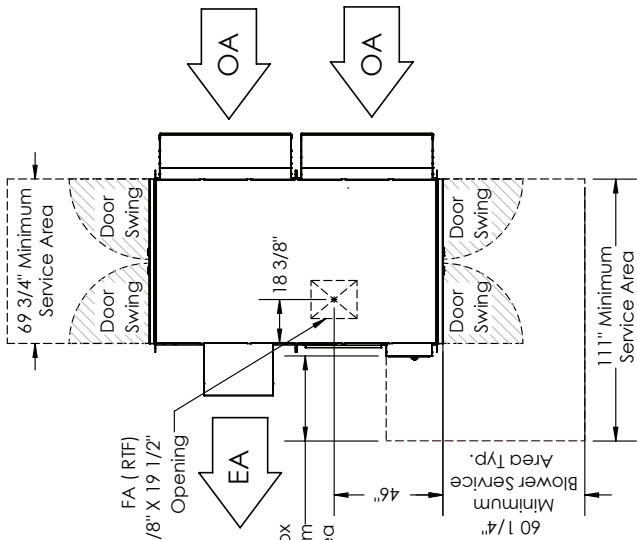
**UNIT MOUNTING & APPLICATION**  
 Must be mounted as shown. Airstreams can not be switched.

**LE6XRT (RTH/RTF) Energy Recovery Ventilator Standard**

**ABBREVIATIONS**  
 EA: Exhaust Air to outside  
 OA: Outside Air intake  
 RA: Room Air to be exhausted  
 FA: Fresh Air to inside  
 RTF: Rooftop Vertical FA Only  
 RTH: Rooftop Horizontal RA & FA

**INSTALLATION ORIENTATION**  
 Unit must be installed in orientation shown.

**NOTE:**  
 1. UNLESS OTHERWISE SPECIFIED, DIMENSIONS ARE ROUNDED TO THE NEAREST EIGHTH OF AN INCH.  
 2. SPECIFICATIONS MAY BE SUBJECT TO CHANGE WITHOUT NOTICE.



RIGHT VIEW

FRONT VIEW

LEFT VIEW

**AIRFLOW CONFIGURATION**  
 Available as shown:



**UNIT MOUNTING & APPLICATION**  
 Must be mounted as shown. Airstreams can not be switched.

