

LE 8XINH

Energy Recovery Ventilator Standard



INDOOR UNIT



LE8XINV shown

Download specification at:
renewaire.com/specifications

SPECIFICATIONS

Ventilation Type:

Static plate, heat and humidity transfer

Typical Airflow Range: 2,000-8,800 CFM

AHRI 1060 Certified Core: Eight L125-G5

Standard Features:

- TEFC Premium efficiency motors
- Motor starters
- Non-fused disconnect
- 24 VAC transformer/relay package
- Cross-core differential pressure ports

Filters: Total qty. 16, MERV 8: 20" x 25" x 2"

Unit Dimensions:

80 1/2" L x 165" W x 71 1/4" H
Modular (per module) 1,214-1,672 lbs., varies by option(s)
Assembled (1-piece) 2,479-3,279 lbs., varies by option(s)

Max. Shipping Dimensions & Weight (on pallet):

Modular (2-modules) 100" L x 90" W x 78" H
Module 1 - 1,852 lbs., Module 2 - 1,789 lbs.
Assembled (1-piece) 200" L x 90" W x 78" H - 3,638 lbs.

Motor(s):

Qty. 2, Belt drive blower/standard motor packages with choice of adjustable sheaves for low, medium or high blower speed (see table below)

Options:

- Spring vibration isolators
- Onboard variable frequency drives (VFDs) - one or both airstreams
- Shaft grounding ring on motors with VFDs
- Fused disconnect
- Integrated programmable controls - enhanced, premium
- Class 1 low leakage motorized isolation dampers - OA, RA or both airstreams
- Qty. 2, Factory mounted filter alarms - both airstreams
- Double wall construction
- Exterior paint - white, custom colors

Accessories:

- Filters - MERV 13, 2" or 4"; MERV 8, 4" (shipped loose)
- Digital time clock - wall mount (TC7D-W), in exterior enclosure (TC7D-E)
- Carbon dioxide sensor/control - wall mount (CO2-W), duct mount (CO2-D)
- IAQ sensor - wall mount (IAQ-W), duct mount (IAQ-D)
- Motion occupancy sensor/control - ceiling mount (MC-C), wall mount (MC-W)
- Smoke Detector - duct mount (SD-D)
- Electric duct heater - EK series (1-175 kW)
- Indirect gas-fired duct furnace - GH series (50-400 MBH), installed downstream of any fans

AIRFLOW PERFORMANCE

Airflow CFM	External Static Pressure (in.w.g.)																			
	0.00		0.25		0.50		0.75		1.00		1.25		1.50		1.75		2.00			
	BHP	RPM	BHP	RPM	BHP	RPM	BHP	RPM	BHP	RPM	BHP	RPM	BHP	RPM	BHP	RPM	BHP	RPM		
							3 HP LOW SPEED				3 HP MED SPEED		3 HP HIGH SPEED							
2000							1.0	680	1.3	790	1.5	870	1.8	940	2.0	1000	2.2	1060		
3000							1.1	640	1.4	740	1.7	820	2.0	890	2.3	960	2.6	1020	2.9	1070
4000							1.6	710	1.9	790	2.2	860	2.6	920	2.9	990	3.2	1040	3.6	1100
4500			1.5	660	1.8	740	2.2	810	2.5	880	2.9	940	3.2	1000	3.6	1060	4.0	1110	4.5	1170
5000			1.7	690	2.1	770	2.5	840	2.8	900	3.2	960	3.6	1020	4.0	1070	4.5	1130	4.9	1190
5500	3 HP LOW SPEED	1.7	650	2.0	730	2.4	800	2.8	860	3.2	930	3.6	980	4.0	1040	4.5	1090	4.9	1140	
6000		1.9	690	2.3	760	2.7	830	3.1	890	3.6	950	4.0	1010	4.5	1060	5.0	1110	5.5	1160	7.5 HP HIGH SPEED
6250		2.1	710	2.5	780	2.9	840	3.3	910	3.8	960	4.3	1020	4.7	1070	5.2	1120	5.7	1170	
6500		2.3	720	2.7	790	3.1	860	3.6	920	4.0	980	4.5	1030	5.0	1080	5.5	1130	6.0	1180	
6750		2.4	740	2.9	810	3.3	870	3.8	930	4.3	990	4.8	1040	5.3	1100	5.8	1140	6.3	1190	7.5 HP HIGH SPEED
7000		2.6	760	3.1	830	3.5	890	4.0	950	4.5	1000	5.0	1060	5.6	1110	6.1	1160	6.6	1200	
7250		2.8	780	3.3	850	3.7	910	4.3	960	4.8	1020	5.3	1070	5.8	1120	6.4	1170	7.0	1210	
7500	3.0	800	3.5	860	4.0	920	4.5	980	5.0	1030	5.6	1080	6.2	1130	6.7	1180	7.3	1220		
7750			3.2	820	3.7	880	4.2	940	4.8	990	5.3	1050	5.9	1100	6.5	1140	7.1	1190		
8000	5 HP LOW SPEED	3.5	840	4.0	900	4.5	960	5.1	1010	5.6	1060	6.2	1110	6.8	1160	7.4	1200			
8250		3.7	860	4.2	920	4.8	970	5.4	1030	5.9	1080	6.5	1120	7.1	1170					
8500		4.0	880	4.5	930	5.1	990	5.7	1040	6.3	1090	6.9	1140	7.5	1180					
8800		4.3	900	4.9	960	5.5	1010	6.1	1060	6.7	1110	7.3	1150							
			5 HP MED SPEED		7.5 HP LOW SPEED		7.5 HP MED SPEED													

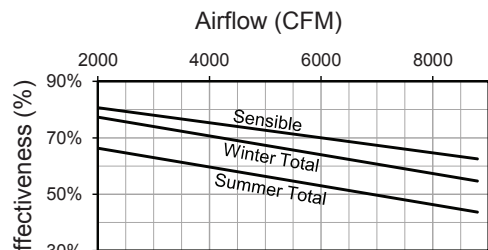
Note: Airflow performance includes effect of clean, standard filter supplied with unit.

ELECTRICAL DATA

Standard Electrical Specifications							Optional Factory Installed VFD Electrical Specifications		
HP	Volts	HZ	Phase	FLA per motor	Min. Cir. Amps	Max. Overcurrent Protection Device	FLA per motor	Min. Cir. Amps	Max. Overcurrent Protection Device
3.0	208-230	60	Single	14.7-14	33.1	40	9.38-8.48	40.2	45
3.0	208-230	60	Three	9.38-8.48	21.1	25	9.38-8.48	23.2	25
	460	60	Three	4.24	9.5	15	4.24	10.5	15
	575	60	Three	3.3	7.4	15	3.3	8.2	15
5.0	208-230	60	Three	14.5-13.4	32.6	45	14.5-13.4	35.9	45
	460	60	Three	6.7	15.1	20	6.7	16.6	20
	575	60	Three	5.3	11.9	15	5.3	13.1	15
7.5	208-230	60	Three	21.0-19.0	47.3	60	21.0-19.0	52.0	60
	460	60	Three	9.5	21.4	25	9.5	23.5	25
	575	60	Three	7.6	17.1	20	7.6	18.8	20

Specifications may be subject to change without notice.

CORE PERFORMANCE



At AHRI 1060 standard conditions.
See all AHRI certified ratings at www.ahrinet.org.

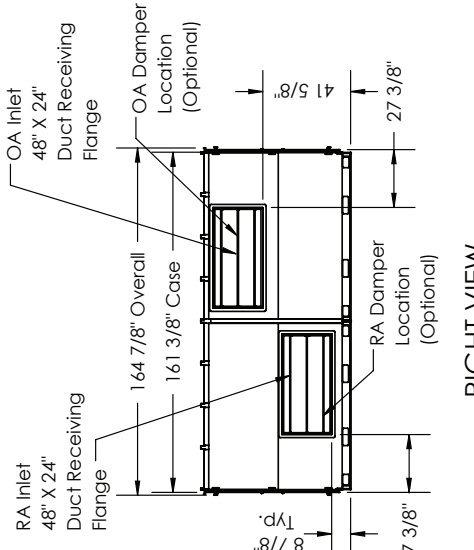
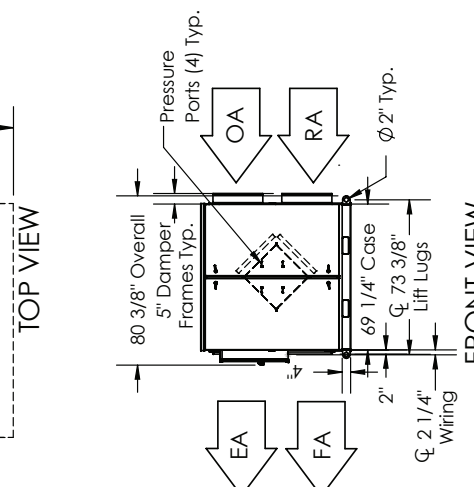
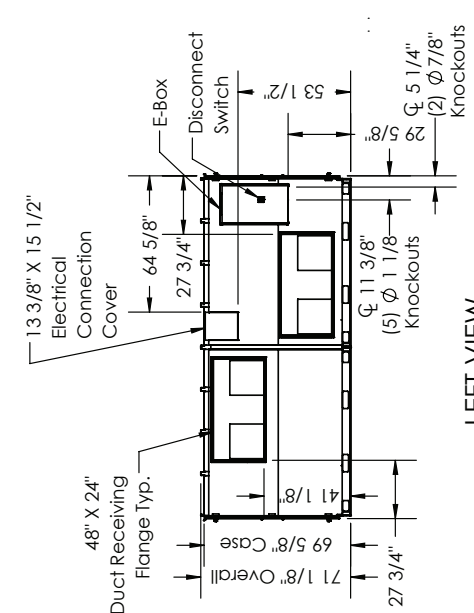
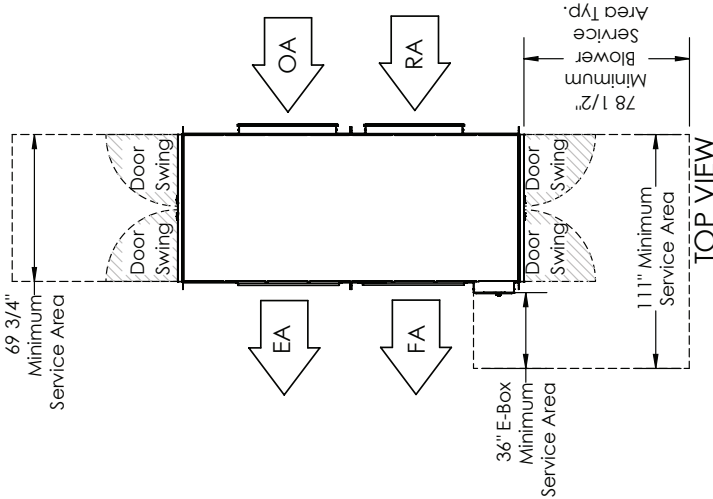


LE8XINH Energy Recovery Ventilator Standard

ABBREVIATIONS
 EA: Exhaust Air to outside
 OA: Outside Air intake
 RA: Room Air to be exhausted
 FA: Fresh Air to inside

INSTALLATION ORIENTATION
 Unit must be installed in orientation shown.

NOTE
 1. UNLESS OTHERWISE SPECIFIED, DIMENSIONS ARE ROUNDED TO THE NEAREST EIGHTH OF AN INCH.
 2. SPECIFICATIONS MAY BE SUBJECT TO CHANGE WITHOUT NOTICE.
 3. MIN. DUCT CLEARANCE FROM DAMPER BLADES WHEN FULLY OPENED TO BE 2". SMACNA RULES APPLY.



AIRFLOW CONFIGURATION
 Available as shown in dimension drawing.

UNIT MOUNTING & APPLICATION
 Must be mounted as shown. RA/EA airstream can be switched with OA/FA airstream unless certain options are selected.

