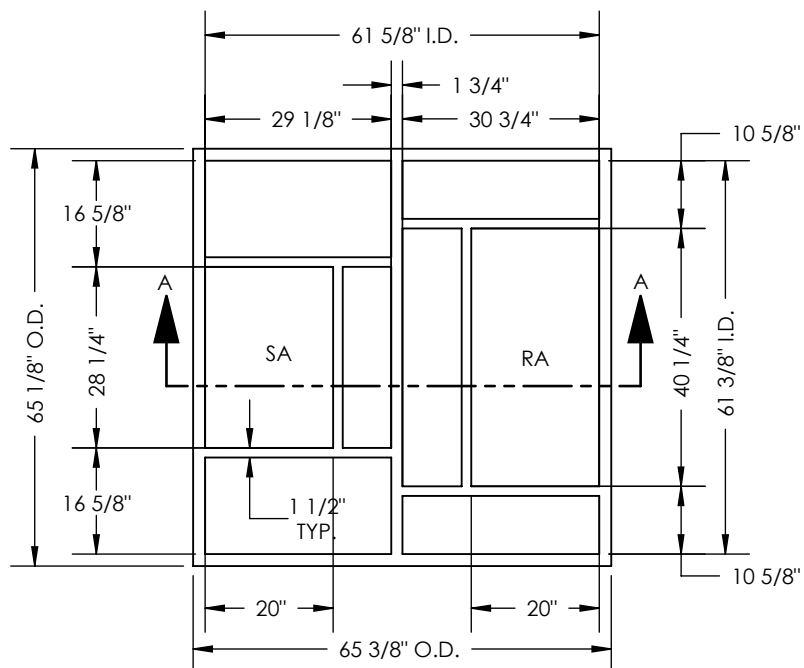


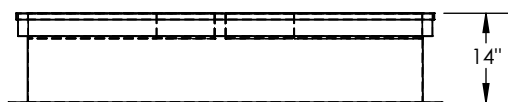
DUCT SUPPORT DIMENSIONS
WIDTH: 1 1/2" DEPTH: 3"

RA: Room Air to be exhausted
SA: Supply Air to inside

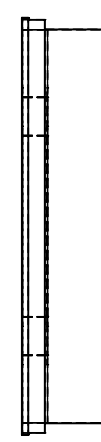
DN3RT
CURB DN3-ERV



TOP VIEW

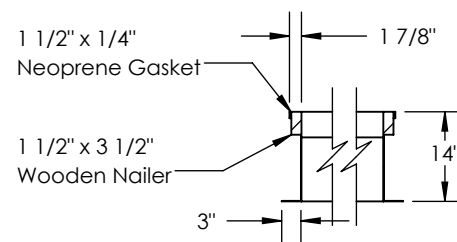


FRONT VIEW



END VIEW

CURB CROSS-SECTION A-A (TYP.)



SECTION A-A