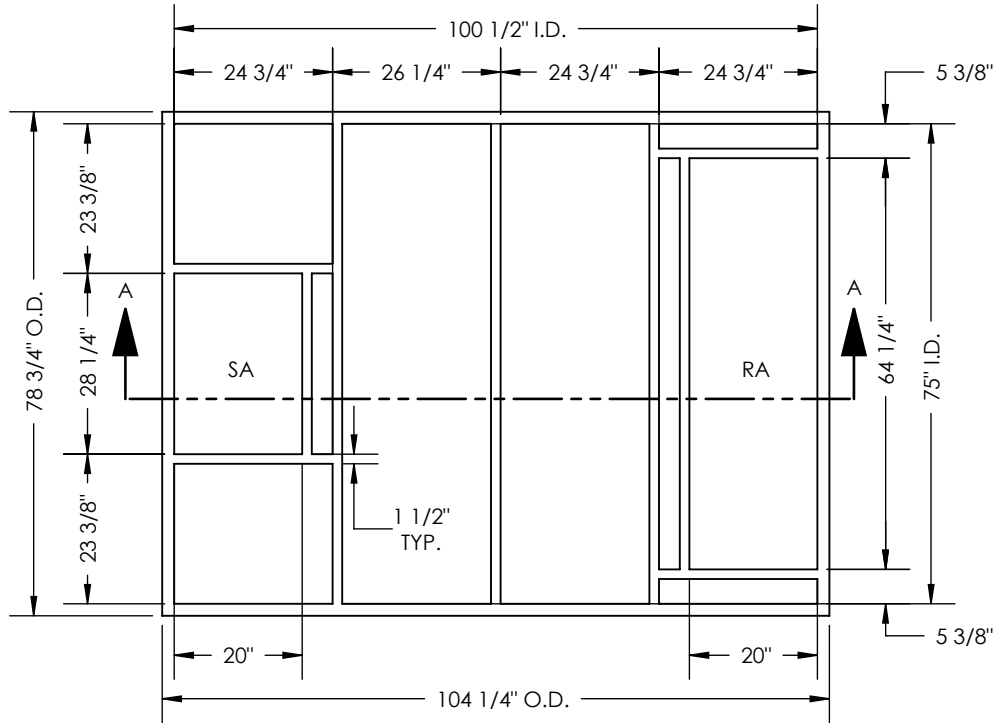


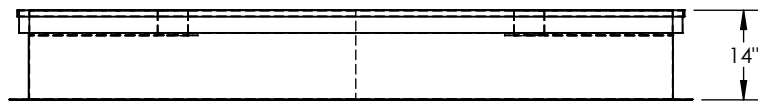
DUCT SUPPORT DIMENSIONS  
 WIDTH: 1 1/2" DEPTH: 3"

RA: Room Air to be exhausted  
 SA: Supply Air to inside

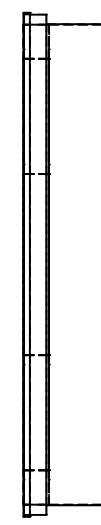
DN5RT  
 CURB DN5-ERV+C



TOP VIEW

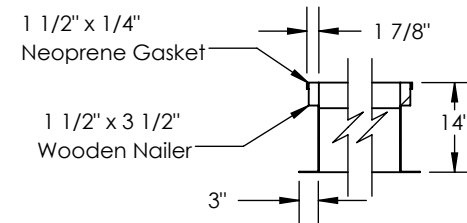


FRONT VIEW



END VIEW

CURB CROSS-SECTION A-A (TYP.)



SECTION A-A