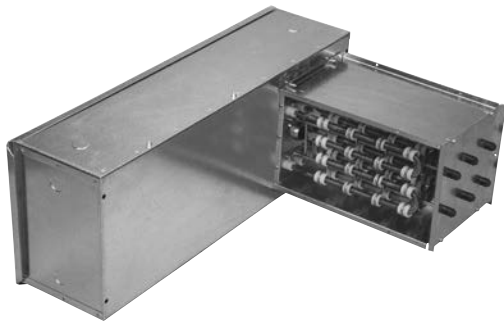


EK SERIES

ELECTRIC DUCT HEATER



Electric Duct Heater (1-175 kW) Accessory



SPECIFICATIONS

Heater Type:
Electric Duct Heater

Typical KW Range:
1-175 kW

- Standard Features:**
- A disconnecting magnetic control contactor per stage or each 48 Amp circuit within a stage
 - Open-coil element
 - Staged on/off
 - Control terminal board
 - Grounding lugs
 - Automatic limit switch for primary over-temperature protection
 - Manual reset limit switch for secondary over-temperature protection
 - Non-adjustable airflow switch
 - Standard control transformer - 24 VAC
 - Disconnect switch
 - Duct thermostat with sensor for on/off control
 - 60-20-20 (Ni/Cr/Fe) C Grade element wire with nickel-plated terminals
 - Slip-in mount
 - No left/right hand
 - Vertical up/down flow

Voltages & Phase:
Single phase - 120, 208, 240, 277
Three phase - 208, 240, 480, 600

Control Voltage:
24 VAC

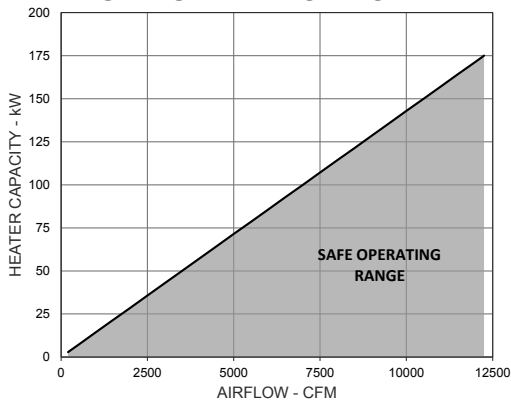
Dimensions:
Minimum - 8" x 8" (W x H)
Maximum - 99" x 99" (W x H)

- Options:**
- Flange mount
 - 80-20 (Ni/Cr) A Grade element wire with stainless steel terminals
 - Recessed control box 1"
 - Gasketed cover - dust tight
 - Power fusing, standard for heaters drawing more than 48 Amps
 - 2-stage
 - Electronic step controller (4-stage)
 - SCR (up to 96 Amps)
 - SCR Vernier (over 96 Amps)
 - Pilot light

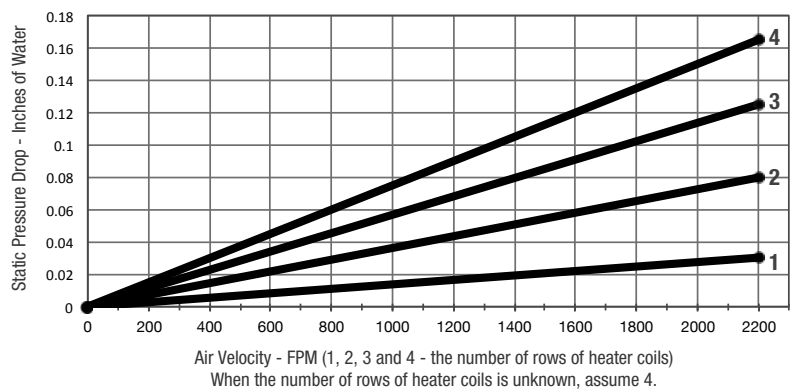
- Accessory:**
- Room thermostat
 - Room/duct thermostat-sensor kit for SCR control

Note: Electric duct heater designed for indoor ductwork installation only.

EK SERIES HEATER CAPACITY



PRESSURE DROP THROUGH HEATER



FLIPPABLE CAPABILITIES

Unique to the EK series, this unit has the ability to flip 180°. Additionally, EK heaters features both vertical up and vertical down airflow.

