



EK SERIES

ELECTRIC DUCT HEATER



Download specification at:
renewaire.com/specifications

Electric Duct Heater (1-175 kW) Accessory

SPECIFICATIONS

Heater Type:
 Electric Duct Heater

Typical KW Range:
 1-175 kW

Standard Features:
 A disconnecting magnetic control contactor per stage or each 48 Amp circuit within a stage
 Open-coil element
 Staged on/off
 Control terminal board
 Grounding lugs
 Automatic limit switch for primary over-temperature protection
 Manual reset limit switch for secondary over-temperature protection
 Non-adjustable airflow switch
 Standard control transformer - 24 VAC
 Disconnect switch
 Duct thermostat with sensor for on/off control
 60-20-20 (Ni/Cr/Fe) C Grade element wire with nickel-plated terminals
 Slip-in mount
 No left/right hand
 Vertical up/down flow

Voltages & Phase:
 Single phase - 120, 208, 240, 277
 Three phase - 208, 240, 480, 600

Control Voltage:
 24 VAC

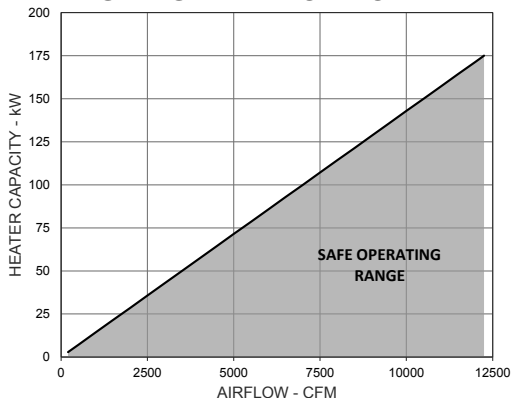
Dimensions:
 Minimum - 8" x 8" (W x H)
 Maximum - 99" x 99" (W x H)

Options:
 Flange mount
 80-20 (Ni/Cr) A Grade element wire with stainless steel terminals
 Recessed control box 1"
 Gasketed cover - dust tight
 Power fusing, standard for heaters drawing more than 48 Amps
 2-stage
 Electronic step controller (4-stage)
 SCR (up to 96 Amps)
 SCR Vernier (over 96 Amps)
 Pilot light

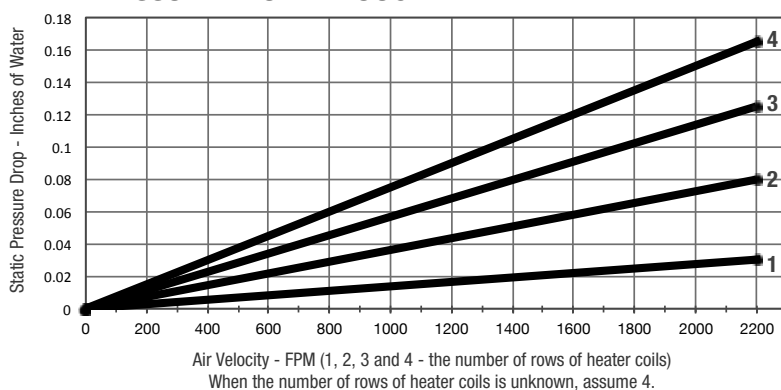
Accessory:
 Room thermostat
 Room/duct thermostat-sensor kit for SCR control

Note: Electric duct heater designed for indoor ductwork installation only.

EK SERIES HEATER CAPACITY

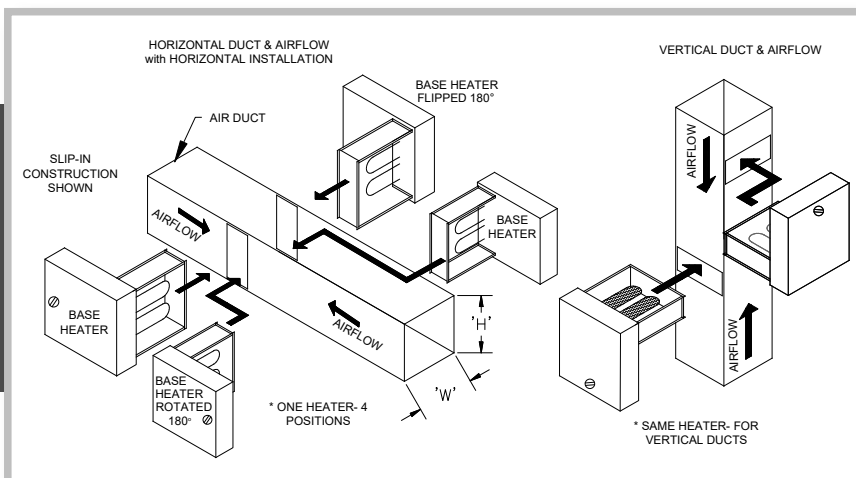


PRESSURE DROP THROUGH HEATER



FLIPPABLE CAPABILITIES

Unique to the EK series, this unit has the ability to flip 180°. Additionally, EK heaters features both vertical up and vertical down airflow.



Specifications may be subject to change without notice.