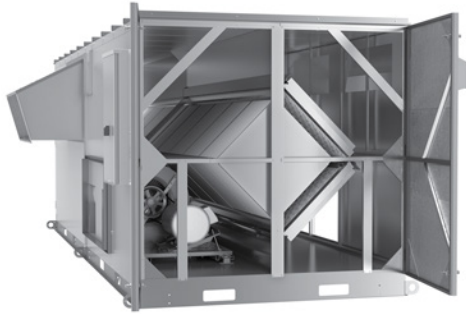


# LE 10XRT

## Energy Recovery Ventilator Standard



### ROOFTOP UNIT



Energy Recovery Core is AHRI Certified®



### SPECIFICATIONS

**Ventilation Type:**  
Static plate, heat and humidity transfer

**Typical Airflow Range:** 2,500-11,000 CFM

**AHRI 1060 Certified Core:** Ten L125-G5

**Standard Features:**  
TEFC Premium efficiency motors  
Motor starters  
Non-fused disconnect  
24 VAC transformer/relay package  
Rubber vibration isolators  
Cross-core differential pressure ports

**Filters:**  
Total qty. 20, MERV 8: 20" x 25" x 2"

**Unit Weight:**  
Modular (per module) 1,493-2,057 lbs., varies by option(s)  
Assembled (1-piece) 3,032-3,993 lbs., varies by option(s)

**Max. Shipping Dimensions & Weight (on pallet):**  
Modular (2-modules) 120" L x 90" W x 78" H  
Module 1 - 2,277 lbs., Module 2 - 2,245 lbs.  
Assembled (1-piece) 240" L x 90" W x 78" H - 4,433 lbs.

**Motor(s):**  
Qty. 2. Belt drive blower/standard motor packages with choice of adjustable sheaves for low, medium or high blower speed. (see table below)

**Options:**  
Spring vibration isolators  
Onboard variable frequency drives (VFDs) - both airstreams  
Shaft grounding ring on motors with VFDs  
Fused disconnect  
Integrated programmable controls - enhanced, premium  
Class 1 low leakage motorized isolation dampers - OA, RA or both  
Qty. 2, Factory mounted filter alarms - both airstreams  
Double wall construction  
Exterior paint - white, custom colors

**Accessories:**  
Filters - MERV 13, 2" or 4"; MERV 8, 4" (shipped loose)  
Automatic balancing damper - 4", 5", 6"  
Roof curb - standard 14"  
Curb wind clip  
Digital time clock - wall mount (TC7D-W), in exterior enclosure (TC7D-E)  
Carbon dioxide sensor/control - wall mount (CO2-W), duct mount (CO2-D)  
IAQ sensor - wall mount (IAQ-W), duct mount (IAQ-D)  
Motion occupancy sensor/control - ceiling mount (MC-C), wall mount (MC-W)  
Smoke Detector - duct mount (SD-D)  
Electric duct heater - EK series (1-175 kW); designed for indoor ductwork installation only  
Indirect gas-fired duct furnace - GH series (50-400 MBH), installed downstream of any fans

### AIRFLOW PERFORMANCE

Airflow CFM	External Static Pressure (in.w.g.)																		
	0.00		0.25		0.50		0.75		1.00		1.25		1.50		1.75		2.00		
	BHP	RPM	BHP	RPM	BHP	RPM	BHP	RPM	BHP	RPM	BHP	RPM	BHP	RPM	BHP	RPM	BHP	RPM	
				3 HP LOW SPEED			3 HP MED SPEED			3 HP HIGH SPEED									
2500					1.0	640	1.2	740	1.5	820	1.7	880	2.0	950	2.3	1000	2.6	1060	
3000					1.1	660	1.4	760	1.7	830	2.0	900	2.3	960	2.6	1020	2.9	1070	
3500					1.3	690	1.6	770	1.9	850	2.2	920	2.5	980	2.9	1040	3.2	1090	
4000					1.5	710	1.8	790	2.1	870	2.5	930	2.8	1000	3.2	1060	3.6	1110	
4500				1.4	650	1.7	740	2.1	810	2.4	890	2.8	950	3.2	1020	3.6	1070	3.9	1130
5000				1.7	680	2.0	760	2.4	840	2.7	910	3.1	970	3.5	1030	3.9	1090	4.4	1150
5500				2.4	800	2.7	870	3.1	930	3.5	990	3.9	1050	4.4	1110	4.8	1170		
6000	3 HP LOW SPEED	1.7	650	2.0	720	2.4	830	3.1	890	3.5	960	4.0	1020	4.4	1080	4.8	1130	5.3	1190
6500	3 HP LOW SPEED	2.1	690	2.4	760	2.8	830	3.1	890	3.5	960	4.0	1020	4.4	1080	4.8	1130	5.3	1190
7000	3 HP LOW SPEED	2.5	740	2.8	800	3.2	870	3.6	930	4.0	980	4.4	1040	4.9	1100	5.3	1160	5.8	1210
7500	5 HP LOW SPEED	3.0	790	3.3	850	3.7	900	4.1	960	4.5	1010	5.0	1070	5.4	1120	5.9	1180	6.4	1230
8000	5 HP LOW SPEED	3.5	840	3.9	890	4.3	940	4.7	990	5.1	1040	5.5	1100	6.0	1150	6.4	1200	6.9	1250
8500	5 HP MED SPEED	4.1	880	4.5	930	4.9	980	5.3	1030	5.7	1070	6.1	1120	6.6	1170	7.0	1220	7.5	1270
9000	5 HP MED SPEED	4.8	930	5.2	970	5.5	1010	5.9	1060	6.3	1100	6.8	1150	7.2	1200	7.7	1240	8.1	1290
9500	7.5 HP LOW SPEED	5.5	970	5.9	1010	6.2	1050	6.6	1090	7.0	1130	7.4	1170	7.8	1220	8.3	1260	8.7	1300
10000	7.5 HP MED SPEED	6.2	1010	6.6	1050	6.9	1080	7.3	1120	7.7	1160	8.1	1200	8.5	1240	8.9	1280	9.3	1310
10500	7.5 HP MED SPEED	7.0	1050	7.3	1080	7.7	1110	8.0	1150	8.4	1180	8.7	1220	9.1	1250	9.5	1290	9.9	1320
11000	10 HP MED SPEED	7.8	1080	8.1	1110	8.4	1140	8.7	1170	9.1	1200	9.4	1230	9.7	1260				
11500	10 HP HIGH SPEED	8.6	1110	8.9	1140	9.2	1160	9.4	1190	9.7	1220								

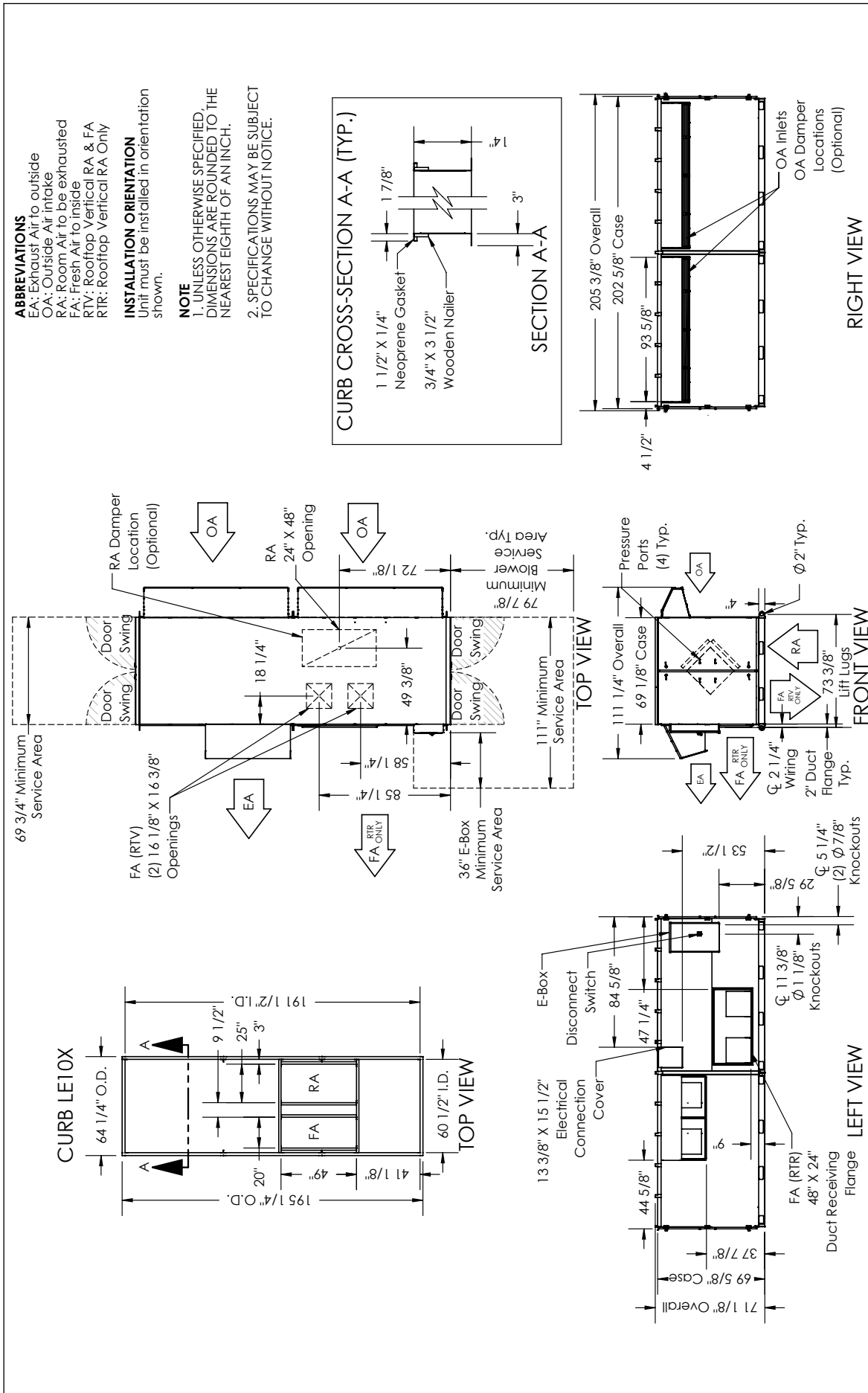
**Note:** Airflow performance includes effect of clean, standard filter supplied with unit.

### ELECTRICAL DATA

Standard Electrical Specifications							Optional Factory Installed VFD Electrical Specifications		
HP	Volts	HZ	Phase	FLA per motor	Min. Cir. Amps	Max. Overcurrent Protection Device	FLA per motor	Min. Cir. Amps	Max. Overcurrent Protection Device
3.0	208-230	60	Single	14.7-14	33.1	40	9.38-8.48	40.2	45
3.0	208-230	60	Three	9.38-8.48	21.1	25	9.38-8.48	23.2	25
	460	60	Three	4.24	9.5	15	4.24	10.5	15
	575	60	Three	3.3	7.4	15	3.3	8.2	15
5.0	208-230	60	Three	14.5-13.4	32.6	45	14.5-13.4	35.9	45
	460	60	Three	6.7	15.1	20	6.7	16.6	20
	575	60	Three	5.3	11.9	15	5.3	13.1	15
7.5	208-230	60	Three	21.0-19.0	47.3	60	21.0-19.0	52.0	60
	460	60	Three	9.5	21.4	25	9.5	23.5	25
	575	60	Three	7.6	17.1	20	7.6	18.8	20
10.0	208-230	60	Three	27.0-24.4	60.8	80	27.0-24.4	66.8	80
	460	60	Three	12.2	27.5	35	12.2	30.2	35
	575	60	Three	9.76	22.0	30	9.76	24.2	30



**LE10XRT (RTV/RTR) Energy Recovery Ventilator Standard**



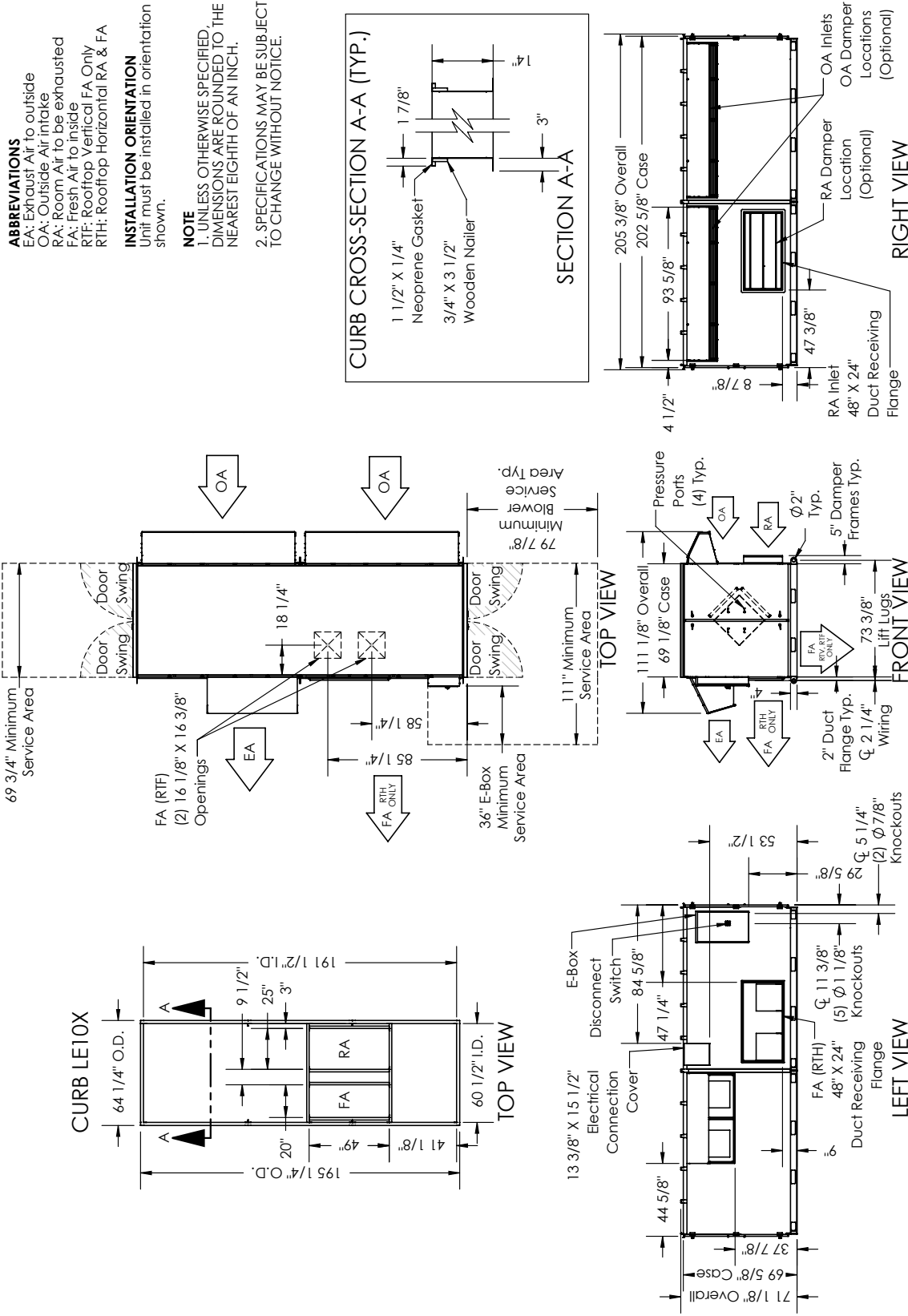
**AIRFLOW ORIENTATION**  
 Available as shown:



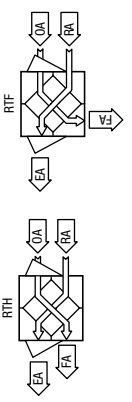
**UNIT MOUNTING & APPLICATION**  
 Must be mounted as shown. Airstreams can not be switched.



**LE10XRT (RTH/RTF) Energy Recovery Ventilator Standard**



**UNIT MOUNTING & APPLICATION**  
 Must be mounted as shown. Airstreams can not be switched.



**AIRFLOW ORIENTATION**  
 Available as shown:

