

# SL 75

INDOOR UNIT

**NEW**

## Energy Recovery Ventilator EC Motor



### SPECIFICATIONS

**Ventilation Type:**  
Static plate, heat and humidity transfer

**Typical Airflow Range:** 30–130 CFM

**Unit is HVI Tested/Certified per CSA C439**  
**Protocol:** Using one L-30-G5 Core

**Standard Features:**

- White painted cabinet
- Line-cord power supply
- Low-voltage circuit for controls
- Unit may be mounted in any orientation
- Cross-core differential pressure ports
- Dial-A-Flow: balance and airflow adjustment
- Variable speed
- Boost-mode

**Controls:**

Onboard digital controller with independent variable speeds

**Filters:**

Total qty. 2, MERV 8, spun-polyester media:  
7 1/2" x 10 1/2" x 1"

**Unit Weight:** 35 lbs.

**Max. Shipping Dimensions & Weight (in carton):**

31 1/4" L x 22 3/8" W x 14 3/8" H  
41 lbs.

**Motor(s):**

Qty. 2, 120V EC motorized impellers

**Accessories:**

- Backdraft damper: 6", 8"
- Automatic balancing damper: 4", 5", 6"
- Louvered wall vent 6": white, brown
- Louvered wall vent 8": taupe vinyl, galvanized, paintable galvanneal
- Louvered wall vent with 8" round duct connection: 12" W x 8" H
- Digital time clock: wall mount (TC7D-W), in exterior enclosure (TC7D-E)
- Carbon dioxide sensor/control: wall mount (CO2-W)
- IAQ sensor: wall mount (IAQ-W)
- Motion occupancy sensor/control: ceiling mount (MC-C), wall mount (MC-W)
- Push-button boost timer (PBT)
- Percentage timer control (PTL)
- Percentage timer control with furnace interlock (FM)
- Push-button point-of-use controls (PBL), PTL req'd.
- MERV 13 filter: OA airstream (shipped loose)
- Wall bracket kit
- Electric duct heater: RH series (1–4 kW); designed for indoor ductwork installation only

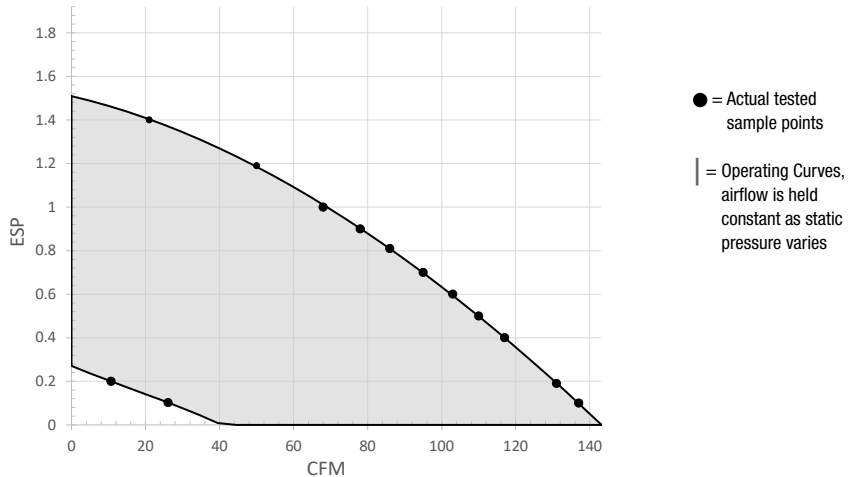
### EC MOTOR OPERATING RANGE

Sample Points Depicted in Larger Dots		
Airflow (CFM)	External Static Pressure (Inches Water Column)	Unit Power Consumption (Watts)
<b>Max. Speed</b>		
138	0.1	135
131	0.2	134
125	0.3	133
117	0.4	132
110	0.5	131
102	0.6	129
95	0.7	126
87	0.8	123
78	0.9	119
68	1.0	114
49	1.2	102
34	1.4	81
<b>Min. Speed</b>		
26	0.1	11
11	0.2	9

**Note:** Watts is for the entire unit.

**Note:** Airflow performance includes effect of clean, standard filter supplied with unit.

**Note:** Refer to CORES for specific operating point electrical data.



### CORE PERFORMANCE

Airflow (CFM)	Sensible EFF%	Total EFF% Winter/Summer
<b>Max. Speed</b>		
138	63	54/36
131	64	55/38
125	65	57/40
117	67	59/42
110	68	60/44
102	69	62/46
95	70	64/48
87	72	66/51
78	73	68/53
68	75	70/56
49	78	75/61
34	82	78/66
<b>Min. Speed</b>		
26	84	80/68
11	87	83/72

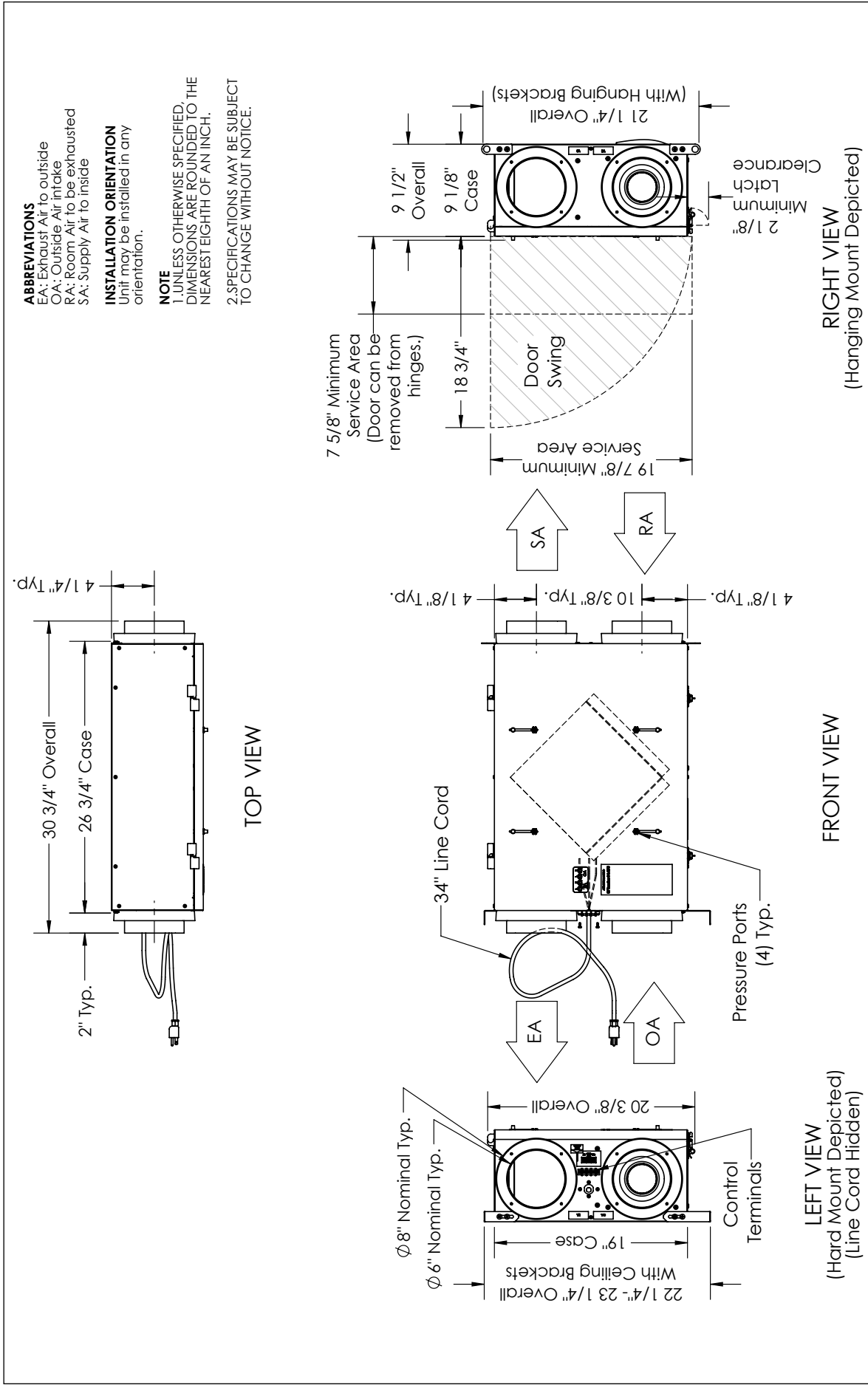
**Note:** These are core-only ratings and are not HVI certified. Total EFF% calculated at 35/33wb OA and 70/58wb RA (winter) and 98/78wb OA and 75/63wb RA (summer). HVI ratings apply to complete units only. This unit is HVI certified. See HVI certified ratings on pg. 46 of Single/Multi-Family Catalog and at hvi.org.

### ELECTRICAL DATA

Watts	Volts	Hz	Phase	FLA per motor	Min. Cir. Amps	Max. Overcurrent Protection Device
53	120	60	1	0.85	10	10



**SL75** Energy Recovery Ventilator EC Motor



**ABBREVIATIONS**  
EA: Exhaust Air to outside  
OA: Outside Air intake  
RA: Room Air to be exhausted  
SA: Supply Air to inside

**INSTALLATION ORIENTATION**  
Unit may be installed in any orientation.

**NOTE**  
1. UNLESS OTHERWISE SPECIFIED, DIMENSIONS ARE ROUNDED TO THE NEAREST EIGHTH OF AN INCH.  
2. SPECIFICATIONS MAY BE SUBJECT TO CHANGE WITHOUT NOTICE.

**AIRFLOW ORIENTATION**  
Available as shown in dimension drawing.



**UNIT MOUNTING & APPLICATION**  
Can be mounted in any orientation. RA/OA airstream can be switched with OA/SA airstream.

