

# BR 130

## INDOOR UNIT DUCT MOUNTED OR THRU-THE-WALL



**Note:** There are multiple control options designed to address individual climate conditions. Please consult your local installer for the best installation controls for your climate.

### ELECTRICAL DATA

HP	Volts	Hz	Phase	Watts	FLA
0.1	120	60	Single	121 @ 124 CFM	1.3

## ENERGY RECOVERY VENTILATOR



### SPECIFICATIONS

**Ventilation Type:**  
Static plate, heat and humidity transfer

**Typical Airflow Range:** 50–140 CFM

**Unit is HVI Tested/Certified per CSA C439 Protocol:**  
Using one L-50-G5 Core

**Standard Features:**  
White painted cabinet  
Line-cord power supply  
Built-in control  
Unit may be mounted in any orientation  
Cross-core differential pressure ports

**Control:**  
Built-in proportional runtime control and switched terminals for furnace/AC interconnect

**Filters:**  
Total qty. 2, MERV 8, spun-polyester media:  
10 1/2" x 10 1/2" x 1"

**Unit Weight:** 48 lbs.

**Max. Shipping Dimensions & Weight (in carton):**  
32" L x 22" W x 18" H  
60 lbs.

**Units Per Pallet:** 8

**Motor(s):**  
Qty. 1, Double-shaft standard motor

**Accessories:**  
Backdraft damper: 6", 8"  
Automatic balancing damper: 4", 5", 6"  
Motorized Dampers: 6"  
Concentric Vent: 6" (CV6-110)  
Louvered wall vent 6": white, brown  
Exterior thru-the-wall installation kit  
Duct collar kit (two collars)  
MERV 13 filter: OA airstream (shipped loose)  
Electric duct heater: RH series (1–5 kW);  
designed for indoor ductwork installation only

### UNIT PERFORMANCE

Airflow (CFM)	External Static Pressure (Inches Water Column)
51	0.70
68	0.60
93	0.50
112	0.40
131	0.30
140	0.20
148	0.10

### CORE PERFORMANCE

Airflow (CFM)	Temp EFF%	Total EFF% Winter/Summer
51	82	78/65
68	80	75/61
93	76	71/56
112	74	68/53
131	71	65/49
140	70	63/47
148	69	62/46

**Note:** These are core-only ratings and are not HVI certified. Total EFF% calculated at 35/33wb OA and 70/58wb RA (winter) and 98/78wb OA and 75/63wb RA (summer). HVI ratings apply to complete units only. This unit is HVI certified. See HVI certified ratings on pg. 46 of Single/Multi-Family Catalog and at hvi.org.

### UNIT DIMENSIONS



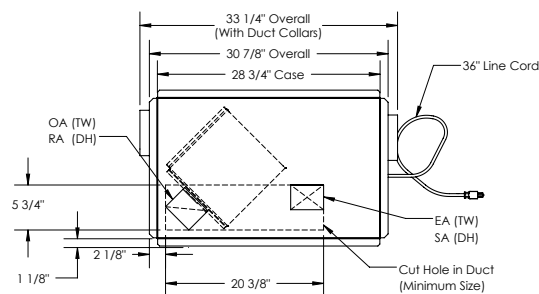
#### AIRFLOW ORIENTATION

Available as shown in dimension drawing.

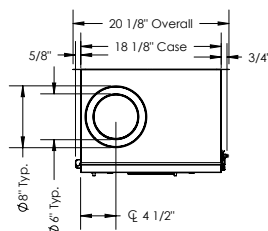


#### UNIT MOUNTING & APPLICATION

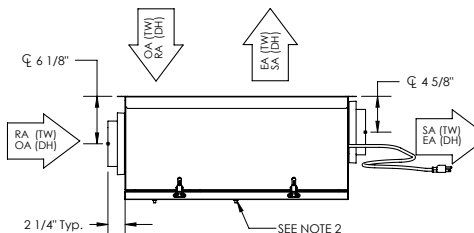
Can be mounted in any orientation. If duct-mounted, airstreams cannot be switched. If mounted with exterior Thru-the-wall installation kit, the RA/OA airstreams are switched with the OA/SA airstreams. If four ducts are connected using duct collar kit, airstreams may be switched.



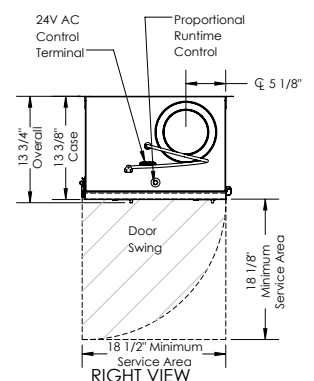
TOP VIEW



LEFT VIEW



FRONT VIEW



RIGHT VIEW

#### ABBREVIATIONS

EA: Exhaust Air to outside  
OA: Outside Air intake  
RA: Room Air to be exhausted  
SA: Supply Air to inside  
TW: Thru Wall  
DH: Duct Hung

#### INSTALLATION ORIENTATION

Unit may be installed in any orientation.

#### NOTE

1. UNLESS OTHERWISE SPECIFIED, DIMENSIONS ARE ROUNDED TO THE NEAREST EIGHTH OF AN INCH.  
2. PRESSURE PORTS FOR EACH AIR STREAM ARE LOCATED ON DOOR OF UNIT.  
3. SPECIFICATIONS MAY BE SUBJECT TO CHANGE WITHOUT NOTICE.